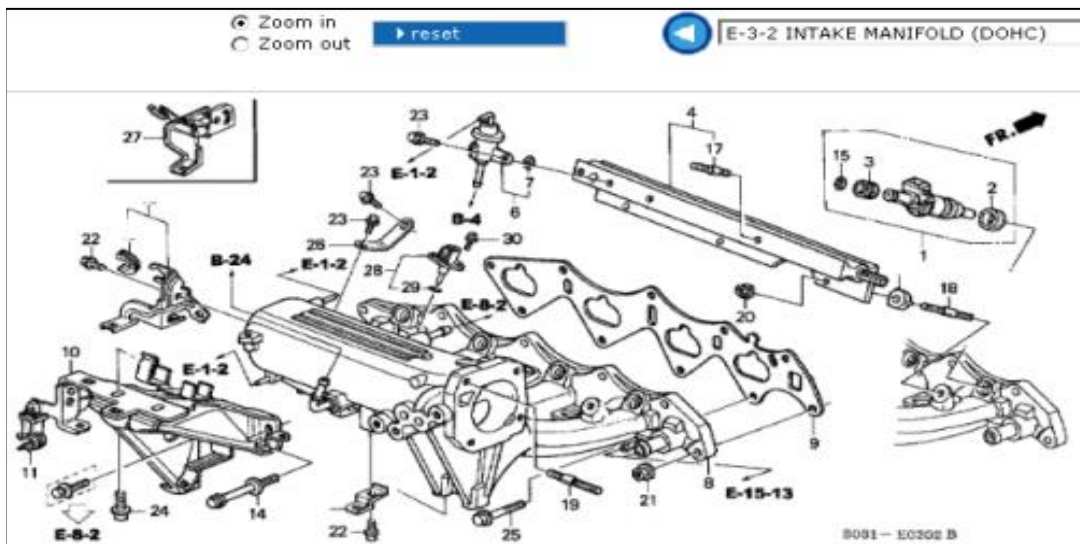


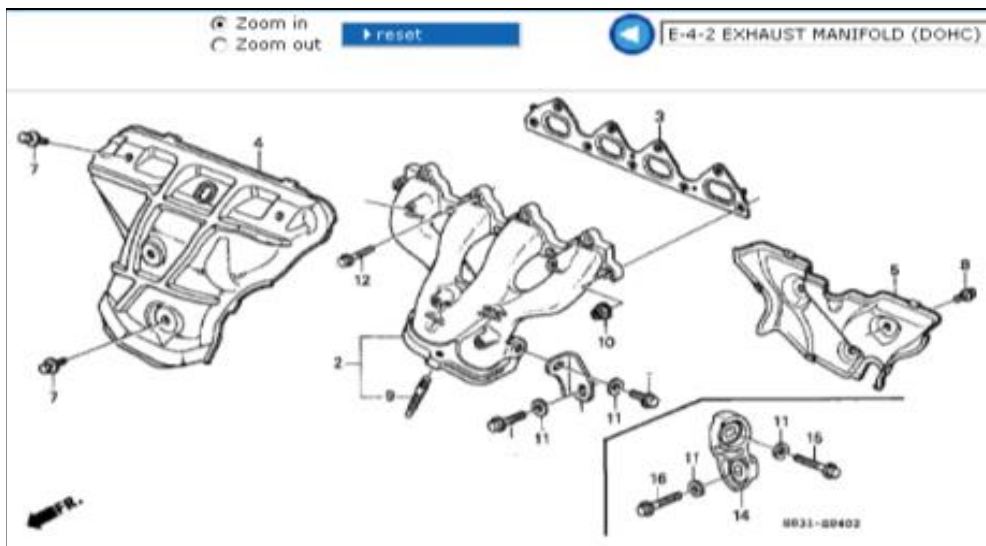
1	16016-P2M-A01	SCREW SET	9.35
3	16075-P07-000	O-RING, 9.8X1.9	£ 1.46
7	16080-P07-000	SCREW-WASHER, 4X16	£ 1.99
8	16176-P2T-004	GASKET, THROTTLE BODY (NIPPON LEAKLESS)	£ 3.39
9	16400-P2T-003	THROTTLE BODY ASSY. (GF97A)	£ 675.22
11	16411-PCT-000	STAY, THROTTLE WIRE	£ 8.98
14	36450-P6T-S01	VALVE ASSY., ELECTRONIC AIR CONTROL (DENSO)	£ 347.77
15	36455-PT3-A01	PACKING, ELECTRONIC AIR CONTROL VALVE (DENSO)	£ 2.13
16	37830-PAA-S00	SENSOR SET, MAP	£ 221.15
17	94050-08080	NUT, FLANGE, 8MM	£ 1.00
18	95005-35150-10	TUBE, 3.5X150 (95005-35001-10M)	£ 2.60
19	17417-PCT-000	TUBE, 3.5X460	£ 5.44
20	95701-06012-08	BOLT, FLANGE, 6X12	£ 0.67
22	95701-08045-08	BOLT, FLANGE, 8X45	£ 1.11
23	95701-08040-08	BOLT, FLANGE, 8X40	£ 1.00
24	95701-08045-08	BOLT, FLANGE, 8X45	£ 1.11
25	36153-PT2-003	CLAMP, TUBE (7.5-13.5)	£ -

☐ ☐

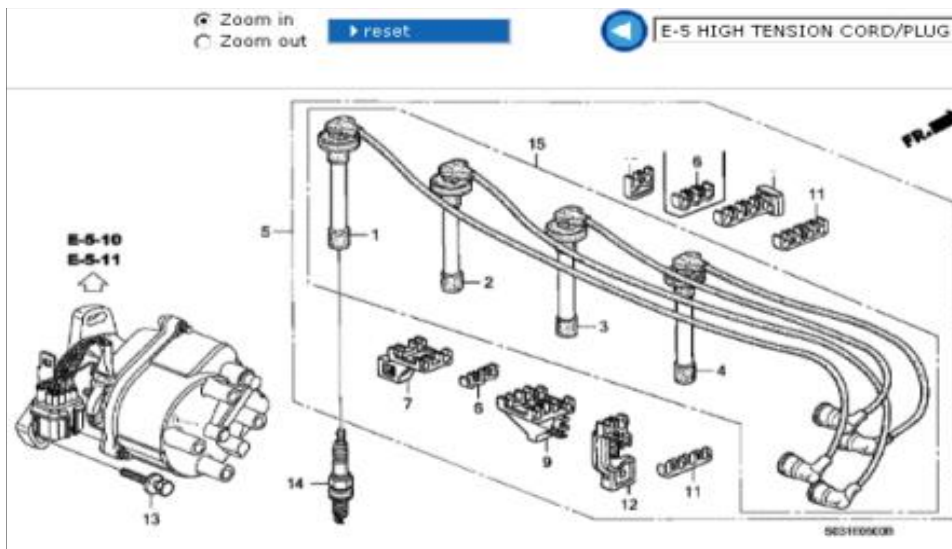



1	06164-P3F-J00	PACKING SET, INJECTOR	£ 204.92
2	16472-PD6-000	SEAL RING, INJECTOR (OTSUKA)	£ 4.84
3	16473-PD6-000	CUSHION RING, INJECTOR (OTSUKA)	£ 4.65
4	16620-P72-010	PIPE ASSY., FUEL	£ 277.93
6	16740-PCT-003	REGULATOR ASSY., PRESSURE	£ 114.22
7	16741-PG7-005	O-RING, PRESSURE REGULATOR	£ 1.95
8	17100-PCT-000	MANIFOLD COMP., INTAKE	£ 316.19
9	17105-P30-004	GASKET, INTAKE MANIFOLD (NIPPON LEAKLESS)	£ 11.86
10	17132-PCT-000	STAY, INTAKE MANIFOLD	£ 62.82
11	19509-PR3-003	CLAMP, ELECTRONIC AIR CONTROL VALVE	£ 3.21
14	90033-P2T-005	BOLT, INTAKE MANIFOLD STAY	£ 3.11
15	91301-PM7-003	O-RING, 7.3X2.2 (ARAI)	£ 4.71
17	92900-06018-1B	BOLT, STUD, 6X18	£ 0.77
18	92900-06022-0B	BOLT, STUD, 6X22	£ 0.77
19	92900-08035-1B	BOLT, STUD, 8X35	£ 1.11
20	94050-06080	NUT, FLANGE, 6MM	£ 0.67
21	94050-08080	NUT, FLANGE, 8MM	£ 1.00
22	95701-06012-08	BOLT, FLANGE, 6X12	£ 0.67
23	95701-06014-08	BOLT, FLANGE, 6X14	£ 0.67
24	95701-08020-08	BOLT, FLANGE, 8X20	£ 0.67
25	95701-08028-08	BOLT, FLANGE, 8X28	£ 1.00
26	16622-P73-000	STAY, FUEL PIPE	£ 6.94
27	17749-S03-Z00	CLAMP, RETURN HOSE	£ 14.01
28	37880-PE2-013	SENSOR ASSY., AIR TEMP	£ 64.47
29	91303-PD1-910	O-RING, 7.5X1.5	£ 1.84
30	93893-05016-08	SCREW-WASHER, 5X16	£ 0.67

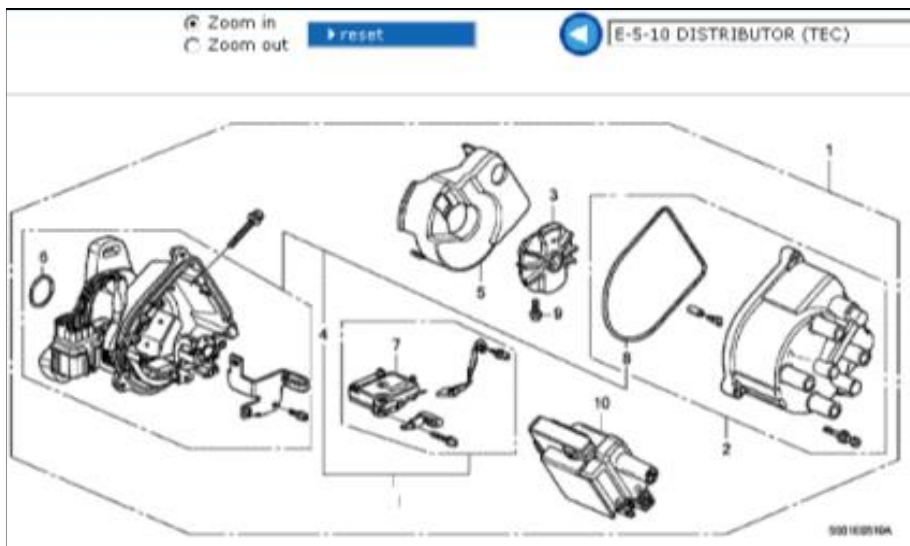




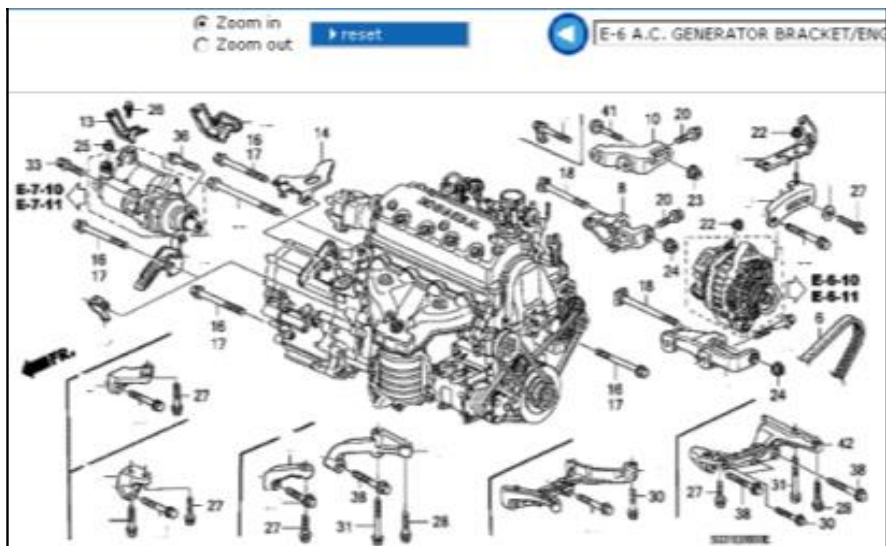
2	18100-P73-A00	MANIFOLD ASSY., EX.	£ 487.99
3	18115-P72-003	GASKET, EX. MANIFOLD (NIPPON	£ 24.83
4	18120-PCT-000	COVER A, EX. MANIFOLD	£ 57.50
5	18121-P73-A00	COVER B, EX. MANIFOLD	£ 35.59
7	90015-PH7-000	BOLT-WASHER, 8X14	£ 1.68
8	90022-PE0-000	BOLT, FLANGE, 8X10	£ 0.77
9	90065-PG6-000	BOLT, STUD, 10X24	£ 3.34
10	90212-PD2-003	NUT, SELF-LOCK, 8MM	£ 2.08
11	90451-PE2-000	WASHER, SPECIAL, 11X28	£ 4.33
12	90001-P30-003	BOLT, FLANGE, 8X25	£ 1.51
14	11942-P73-000	BRACKET, EX. MANIFOLD	£ 27.41
15	90010-P73-000	BOLT, SPECIAL, 10X38	£ 4.17
16	95701-10040-08	BOLT, FLANGE, 10X40	£ 1.11



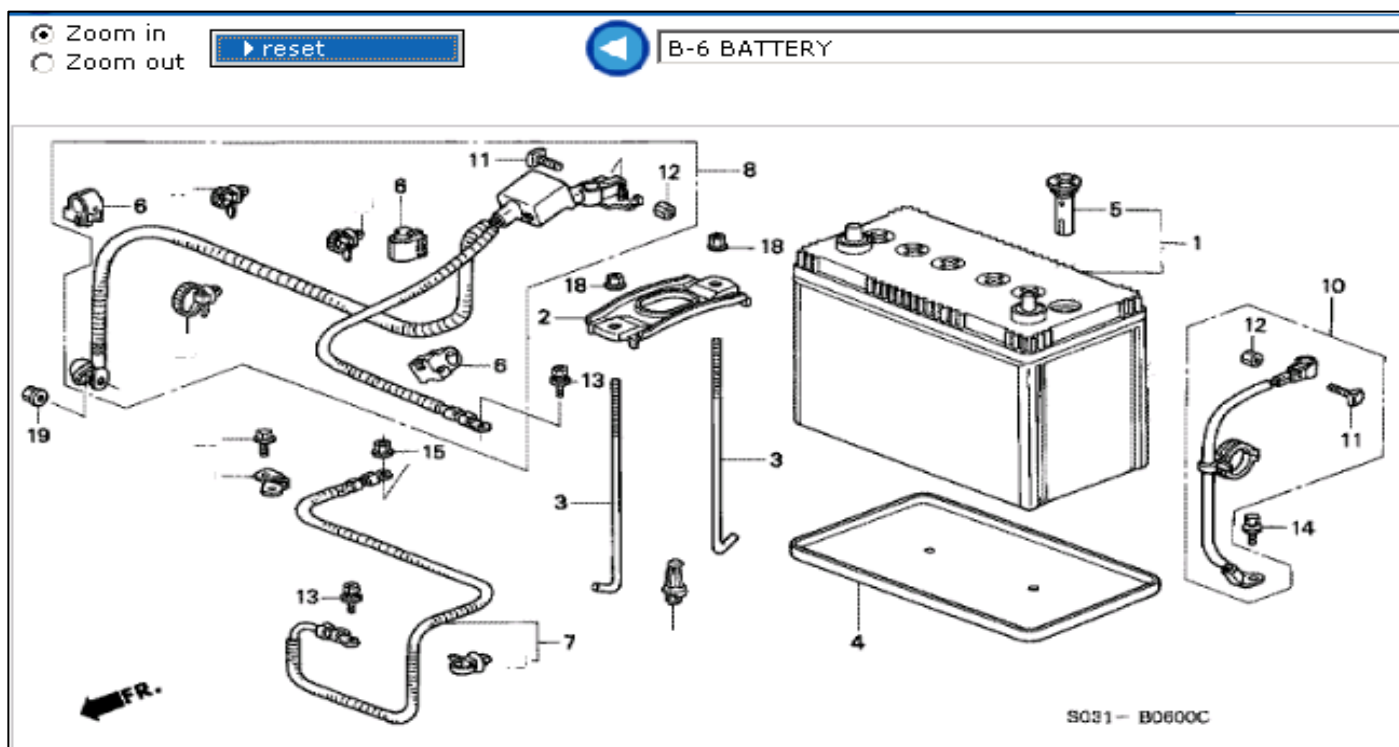
1	32701-P2T-000	CORD COMP., RESISTANCE (NO.1)	£	34.45
2	32702-P2T-000	CORD COMP., RESISTANCE (NO.2)	£	32.09
3	32703-P2T-000	CORD COMP., RESISTANCE (NO.3)	£	32.09
4	32704-P2T-000	CORD COMP., RESISTANCE (NO.4)	£	29.87
5	32722-P2T-000	CORD COMP., HIGH TENSION (SUMITOMO)	£	119.56
6	32763-PM3-000	CLAMP C, HIGH TENSION CORD	£	2.40
7	32764-PR3-000	CLAMP C, HIGH TENSION CORD	£	2.52
9	32766-PR3-000	CLAMP D, HIGH TENSION CORD	£	2.52
11	32767-PT0-000	GROMMET, HIGH TENSION CORD	£	3.20
12	32777-PR3-010	CLAMP E, HIGH TENSION CORD	£	2.53
13	90003-P01-000	BOLT-WASHER, 8X28	£	2.14
14	98079571**	PLUG, SPARK (PFR7G-11) (NGK) *	£	19.52
15	32722-P2T-405	CORD COMP., HIGH TENSION (SUMITOMO)	£	119.56

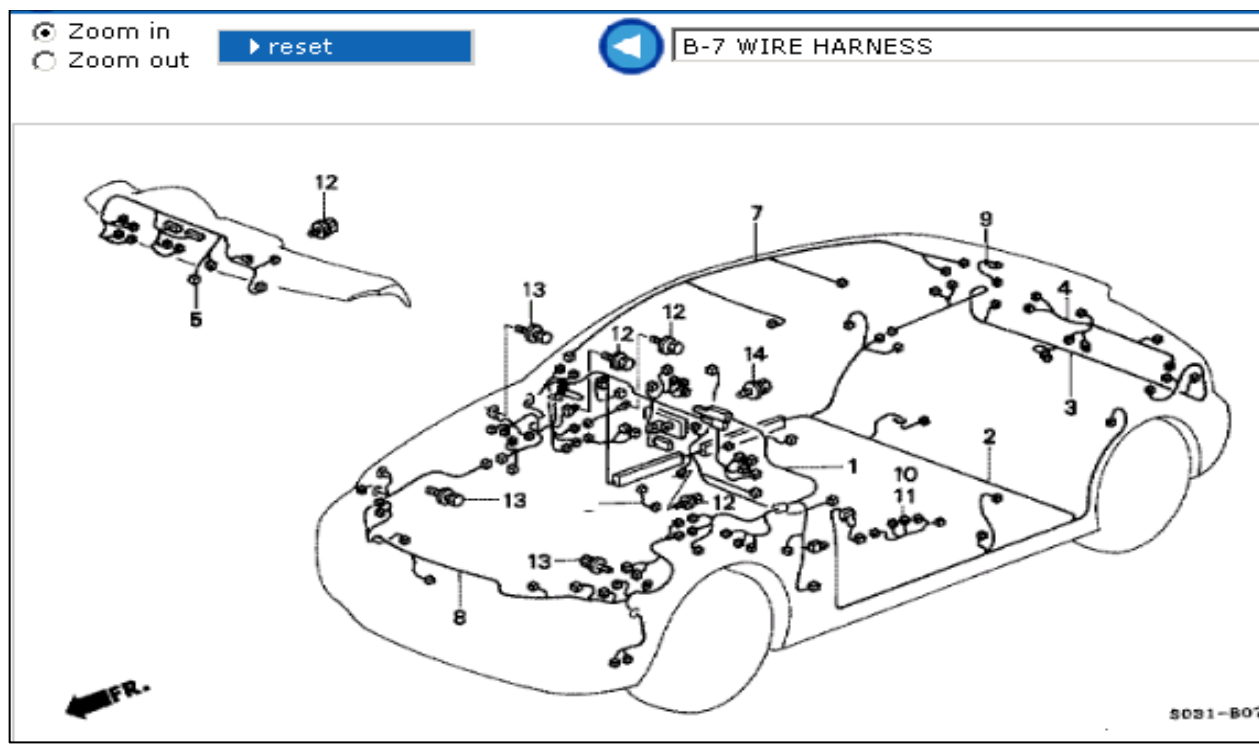


1	30100-P73-A02	DISTRIBUTOR ASSY. (TD-87U) (TEC)	£ 474.40
2	30102-P72-006	CAP ASSY.	£ 29.28
3	30103-P73-003	HEAD ASSY., ROTOR	£ 21.85
4	30105-P73-004	HOUSING COMP., DISTRIBUTOR (TEC)	£ 270.86
5	30107-P73-004	COVER, LEAK	£ 5.81
6	30110-PA1-732	O-RING, 26.4X3.1 (TEC)	£ 2.99
7	30130-P73-A01	IGNITER UNIT (E12-303) (HITACHI)	£ 109.33
8	30132-P72-006	PACKING, CAP	£ 4.12
9	30135-P73-004	SCREW-WASHER, 5X12	£ 1.87
10	30510-P73-A01	COIL ASSY., IGNITION	£ 89.18



6	31110-P73-A01	BELT, ALTERNATOR (MITSUBOSHI)	£	33.99
8	31112-P2T-000	BRACKET COMP. A, ALTERNATOR	£	47.30
10	31113-P2T-000	BRACKET B, ALTERNATOR	£	34.05
13	32747-P2A-000	STAY H, ENGINE WIRE HARNESS	£	4.89
14	32752-P01-000	STAY B, ENGINE WIRE HARNESS	£	5.27
16	90050-PG7-000	BOLT, FLANGE, 12X65	£	3.83
17	90051-PE0-000	BOLT, FLANGE, 12X70	£	4.51
18	90057-PG7-003	BOLT, ALTERNATOR	£	3.78
20	90059-PR3-000	BOLT, KNOCK, 10X35	£	2.94
22	94050-06080	NUT, FLANGE, 6MM	£	0.67
23	94050-08080	NUT, FLANGE, 8MM	£	1.00
24	94050-10080	NUT, FLANGE, 10MM	£	1.00
25	94070-08080	NUT-WASHER, 8MM	£	0.67
26	95701-06012-08	BOLT, FLANGE, 6X12	£	0.67
27	95701-08030-08	BOLT, FLANGE, 8X30	£	1.00
28	95701-08035-08	BOLT, FLANGE, 8X35	£	1.00
30	95701-08045-08	BOLT, FLANGE, 8X45	£	1.11
31	95701-08060-08	BOLT, FLANGE, 8X60	£	1.11
33	95701-10040-08	BOLT, FLANGE, 10X40	£	1.11
36	95701-10105-08	BOLT, FLANGE, 10X105	£	2.13
38	95701-12050-08	BOLT, FLANGE, 12X50	£	1.57
41	90058-P72-000	BOLT, ALTERNATOR UPPER	£	4.50
42	11950-P73-J00	STIFFENER, ENGINE	£	140.68



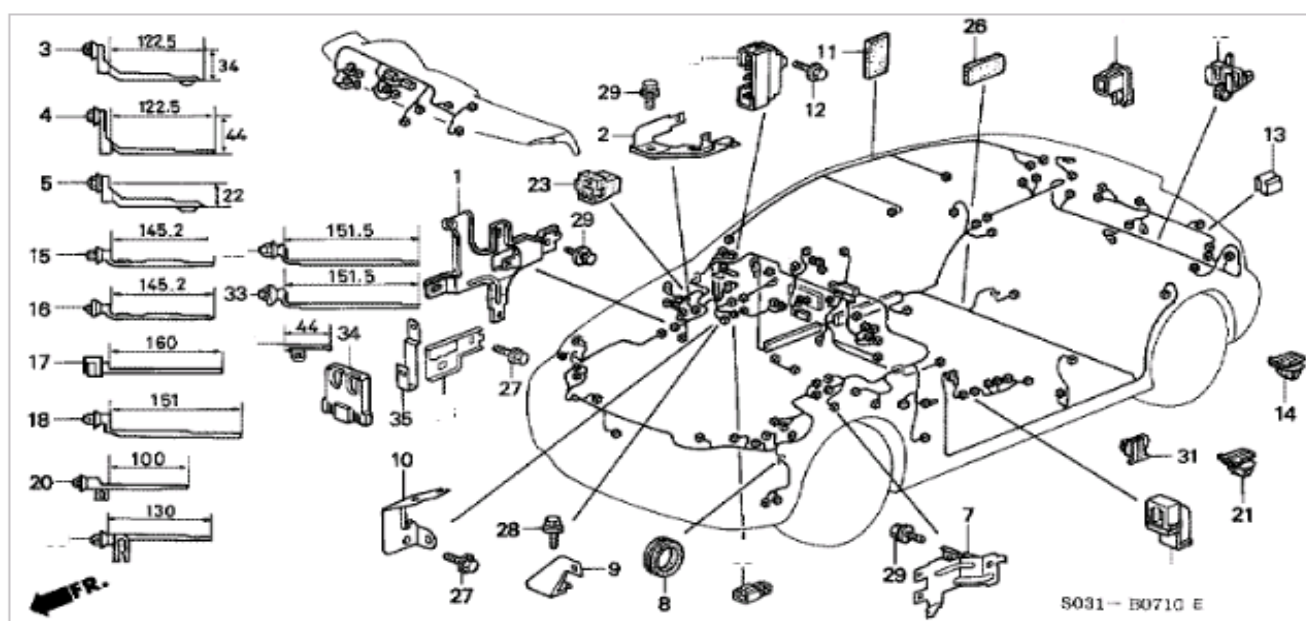


- | | | |
|----|----------------|--|
| 1 | 32100-S07-J51 | HARNESS, CABIN WIRE |
| 2 | 32107-S03-911 | HARNESS, FLOOR WIRE |
| 3 | 32108-S03-000 | HARNESS, RR. WIRE |
| 4 | 32109-S03-Z00 | CORD, TAILGATE |
| 5 | 32117-S04-N20 | HARNESS, INSTRUMENT WIRE |
| 7 | 32155-S03-010 | CORD ASSY., INTERIOR |
| 8 | 32200-S04-N51 | HARNESS, ENGINE ROOM WIRE |
| 9 | 32202-S03-000 | CORD, DEFROSTER EARTH |
| 10 | 32751-S03-010 | HARNESS, DRIVER DOOR WIRE |
| 11 | 32752-S03-010 | HARNESS, PASSENGER DOOR WIRE |
| 12 | 90148-SE0-003 | BOLT, EARTH, 6X16 (WASHER 12.5MM) (ZN) |
| 13 | 90153-SE0-003 | BOLT, EARTH, 6X12 |
| 14 | 93405-06016-08 | BOLT-WASHER, 6X16 |

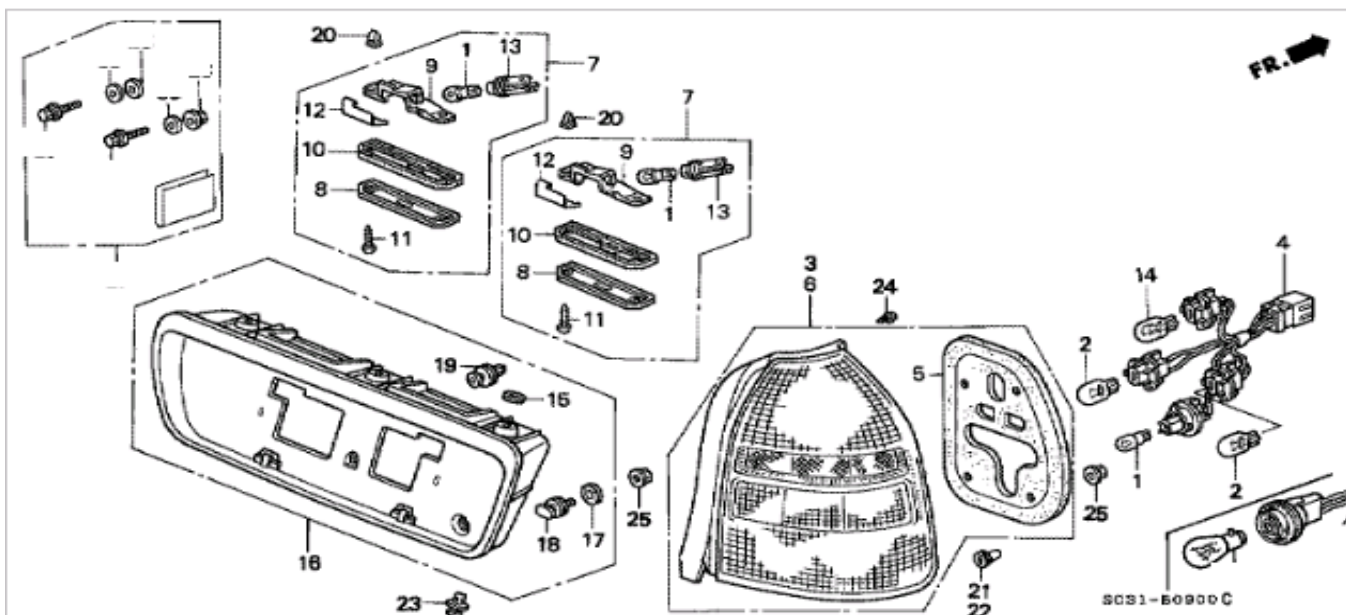
☒ Zoom in
☐ Zoom out

▶ reset

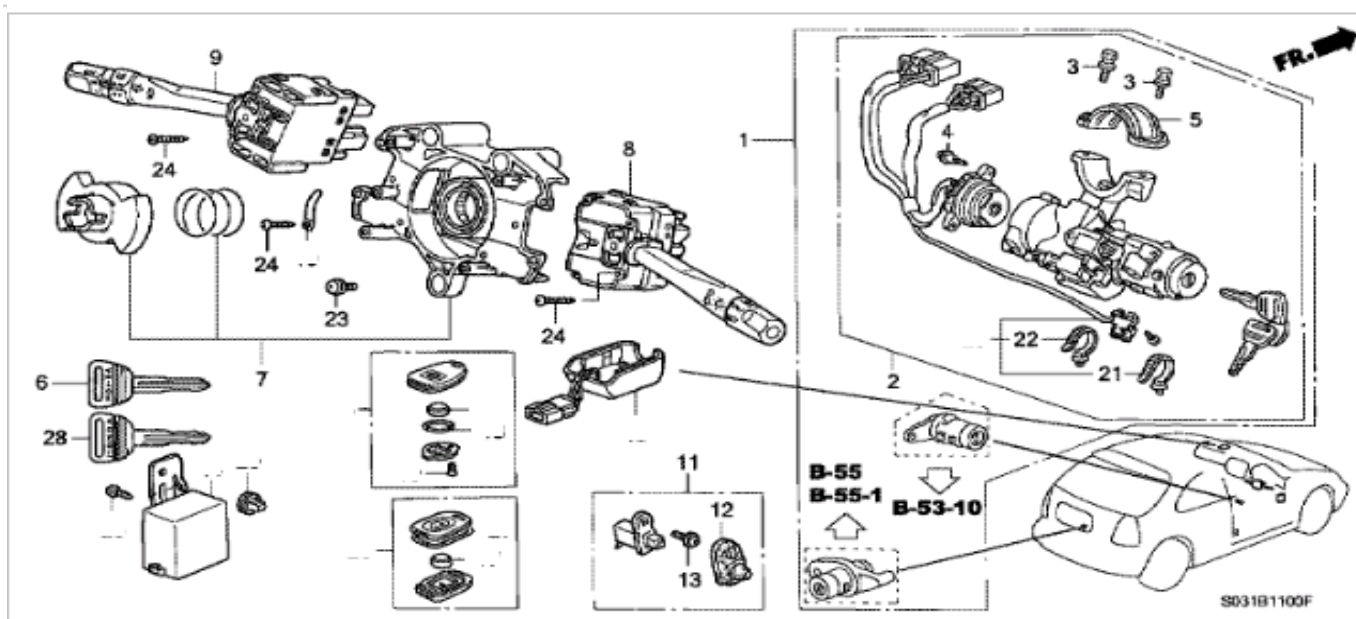
B-7-10 HARNESS BAND/BRACKET



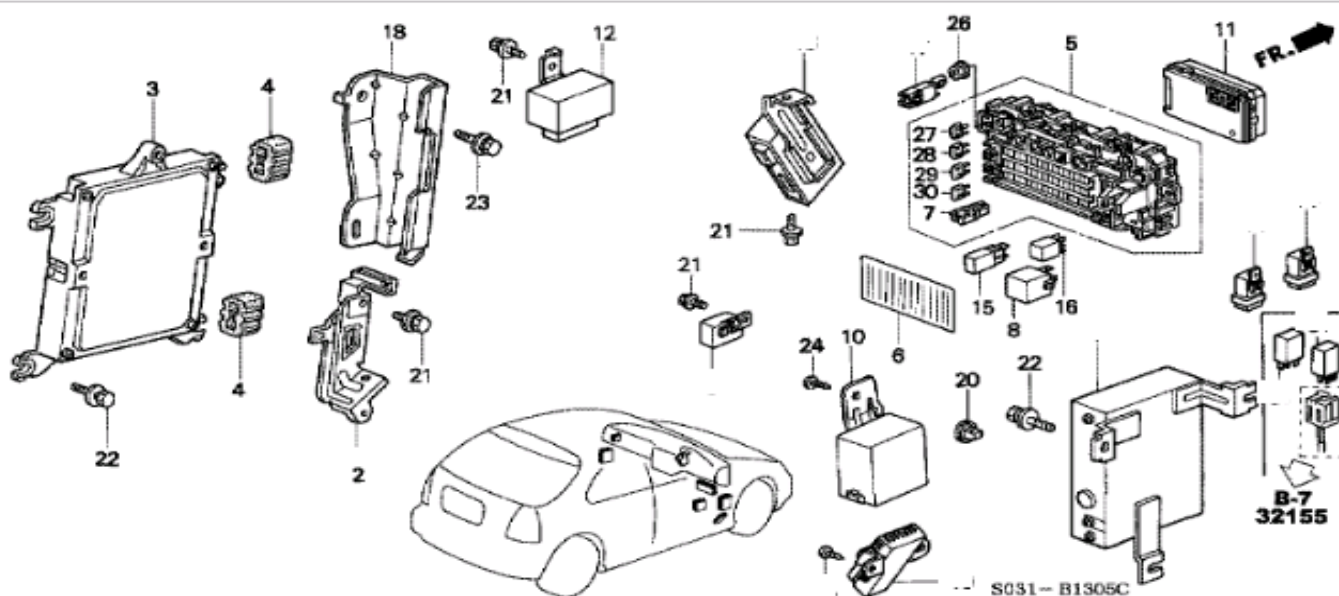
- | | | |
|----|----------------|--|
| 1 | 32113-S04-000 | BRACKET, COUPLER HOLDER |
| 2 | 32114-S04-000 | STAY, COUPLER |
| 3 | 32132-SM4-003 | BAND, WIRE HARNESS OFFSET (20) (BLACK) (122.5MM) |
| 4 | 32133-SM4-003 | BAND, HARNESS OFFSET (30) (YELLOW) (122.5MM) |
| 5 | 32134-SM4-003 | BAND, HARNESS OFFSET (10) (BROWN) (122.5MM) |
| 7 | 32416-S04-000 | BRACKET, STARTER CABLE CLAMP |
| 8 | 52819-SA5-800 | GROMMET, 35MM |
| 9 | 57174-S04-851 | BRACKET, COUPLER |
| 10 | 57175-S04-850 | BRACKET, COUPLER |
| 11 | 72327-SD5-000 | SEAL B, FR. DOOR HOLE (30X50) |
| 12 | 90148-SE0-003 | BOLT, EARTH, 6X16 (WASHER 12.5MM) (ZN) |
| 13 | 90660-SB2-000 | CLIP, CORD |
| 14 | 91534-S03-003 | CLIP, COUPLER (NATURAL) (SEAL) |
| 15 | 91540-SV4-003 | CLIP, HARNESS BAND (NATURAL) (145.2MM) |
| 16 | 91545-SV4-003 | CLIP, HARNESS BAND (NATURAL) (145.2MM) (WITH SEAL) |
| 17 | 91547-SH3-003 | CLIP, BAND (NATURAL) (160MM) |
| 18 | 91551-SW5-003 | CLIP, HARNESS BAND (BROWN) (151MM) |
| 20 | 91556-SM4-003 | CLIP, BAND (BLACK) (100MM) |
| 21 | 91557-SR3-003 | CLIP, WIRE HARNESS PROTECTOR (RED) |
| 23 | 91637-SF1-003 | CAP (090 2P) |
| 26 | 91902-SB2-003 | CUSHION, WIRE HARNESS (50X100) |
| 27 | 93403-06012-08 | BOLT-WASHER, 6X12 |
| 28 | 93403-08016-08 | BOLT-WASHER, 8X16 |
| 29 | 93405-06016-08 | BOLT-WASHER, 6X16 |
| 31 | 90627-SA5-003 | CLIP, WIRE HARNESS (BLUE) (HARNESS TAPING) (50MM) |
| 33 | 91545-S30-003 | CLIP, HARNESS BAND (NATURAL) (151.5MM) (WITH SEAL) |
| 34 | 91751-S30-003 | COVER, POWER RELAY |
| 35 | 91755-SX0-010 | BRACKET, RELAY BLOCK (ISO) |



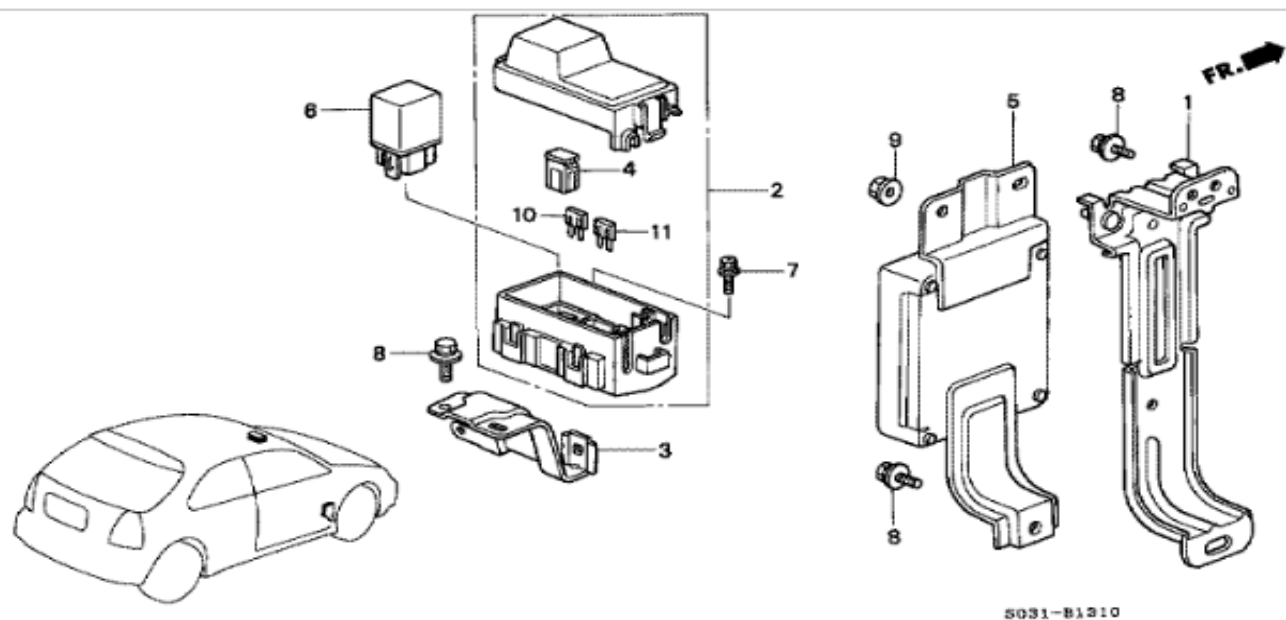
1	33301-SA0-741	BULB (12V 5W) (STANLEY)
2	33303-SL4-003	BULB, WEDGE (12V 21W) (STANLEY)
3	33501-S03-003	LAMP UNIT, R.
4	33502-S03-003	SOCKET COMP.
5	33503-S03-003	GASKET, BASE
6	33551-S03-003	LAMP UNIT, L.
7	34100-S04-003	LIGHT ASSY., LICENSE
8	34101-SR3-A01	LENS
9	34102-S04-A01	HOUSING
10	34103-S04-003	GASKET
11	34104-SE3-A01	SCREW, TAPPING, 4X20
12	34104-SR3-A01	SHADE
13	34304-SH3-A01	SOCKET COMP.
14	34906-ST5-003	BULB (12V 21W/5W) (STANLEY)
15	71712-S03-000	PACKING, TAILGATE SPOILER
16	74890-S03-J00ZK	GARNISH ASSY., RR. LICENSE *NH0* (NH0 CHAMPIONSHIP WHITE)
17	75523-SS0-000	PACKING, SEAL
18	75524-SS0-000	BOLT, SPECIAL, 5MM
19	90501-SL9-003	CLIP, LICENSE GARNISH
20	90521-SE3-003	GROMMET, SCREW, 4MM
21	90650-SL9-003	GROMMET, R. RR. COMBINATION (WHITE)
22	90655-SL9-003	GROMMET, L. RR. COMBINATION (GRAY)
23	91550-SH3-003ZG	CLIP, RR. PANEL LINING *NH120L* (NH120L STAR BLACK)
24	93901-24380	SCREW, TAPPING, 4X12
25	94050-05080	NUT, FLANGE, 5MM



1	06350-S04-920	CYLINDER SET, KEY (SERVICE)
2	35100-S04-921	LOCK ASSY., STEERING
3	35102-SV4-003	BOLT, BREAK HEAD
4	35103-S04-003	SCREW, RECESSED
5	35108-S04-003	HOLDER, COLUMN
6	35113-SH3-013	KEY, BLANK
7	35251-S04-A81	BODY COMP., SWITCH (36MM)
8	35255-SR3-E02	SWITCH ASSY., LIGHTING (B)
9	35256-SR3-E21	SWITCH ASSY., WIPER (G)
11	35400-SL4-013	SWITCH ASSY., DOOR
12	35401-SL4-003	COVER, DOOR SWITCH
13	35409-692-013	SCREW, FLANGE, 4X12
21	91551-SW5-003	CLIP, HARNESS BAND (BROWN) (151MM)
22	91558-ST5-003	CLIP, HARNESS BAND (NATURAL) (135MM) (7MM HOLE)
23	93893-05012-08	SCREW-WASHER, 5X12
24	93901-32420	SCREW, TAPPING, 3X16
28	35113-SH3-305	KEY COMP., IGNITION (SERRATIONS)

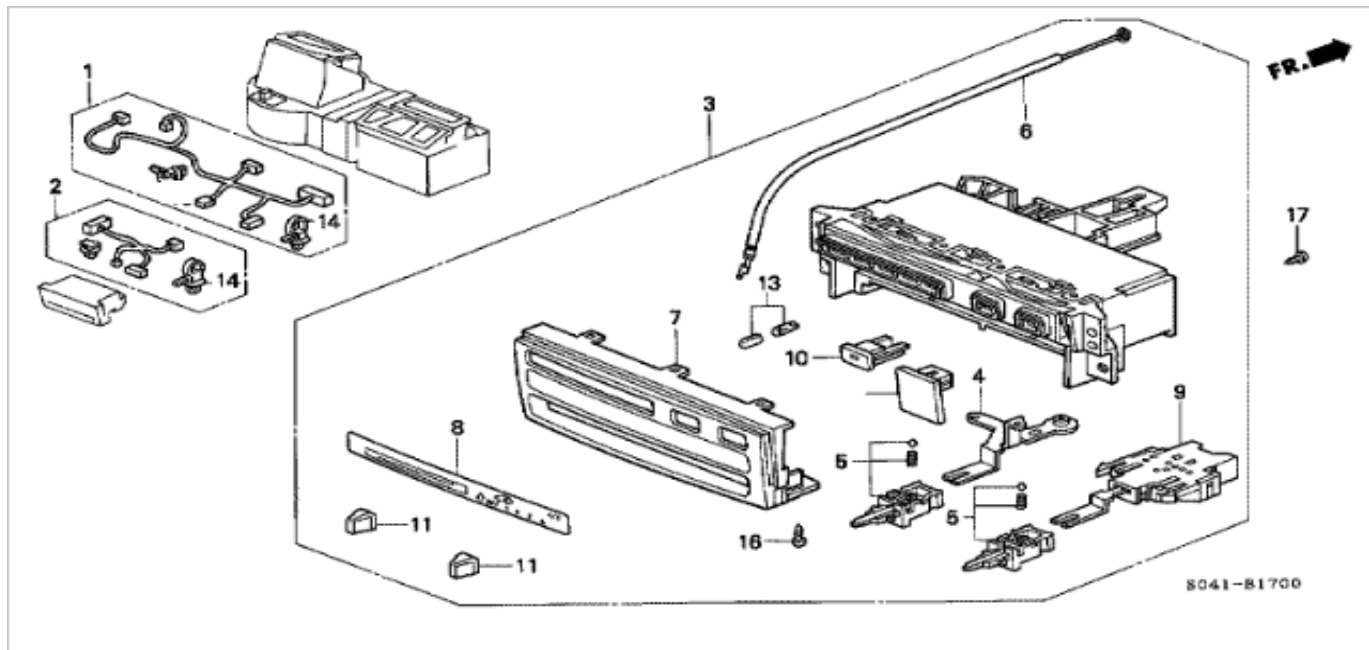


2	32754-P2A-000	STAY S, ENGINE WIRE HARNESS
3	37820-PCT-003	CONTROL MODULE, ENGINE
4	37826-P2A-000	RUBBER, CUSHION
5	38200-S04-A01	BOX ASSY., JOINT
6	38205-S04-000	LABEL, FUSE
7	38235-S04-003	PULLER, MINI FUSE (SUMITOMO)
8	38300SE30**	RELAY ASSY., TURN SIGNAL & HAZARD (166500-0060) (DENSO) *
10	38380-S04-003	CONTROL UNIT, AUTO DOOR LOCK
11	38600-S04-911	CONTROL UNIT, INTEGRATED
12	39400-S10-003	RELAY ASSY., MAIN (MITSUBA)
15	39794S*****	RELAY ASSY., POWER (4P) (DENSO) (056700-7250) *
16	39794-S04-003	RELAY ASSY., POWER (4P) (MICRO ISO) (MITSUBA)
18	64133-S04-000ZZ	BRACKET, ELECTRONIC CONTROL UNIT
20	90670-SG0-003	GROMMET, SCREW, 4MM
21	93403-06012-08	BOLT-WASHER, 6X12
22	93404-06020-08	BOLT-WASHER, 6X20
23	93405-06016-08	BOLT-WASHER, 6X16
24	93903-24420	SCREW, TAPPING, 4X16
26	94050-06080	NUT, FLANGE, 6MM
27	98200-40750	FUSE, MINI (7.5A)
28	98200-41000	FUSE, MINI (10A)
29	98200-41500	FUSE, MINI (15A)
30	98200-42000	FUSE, MINI (20A)

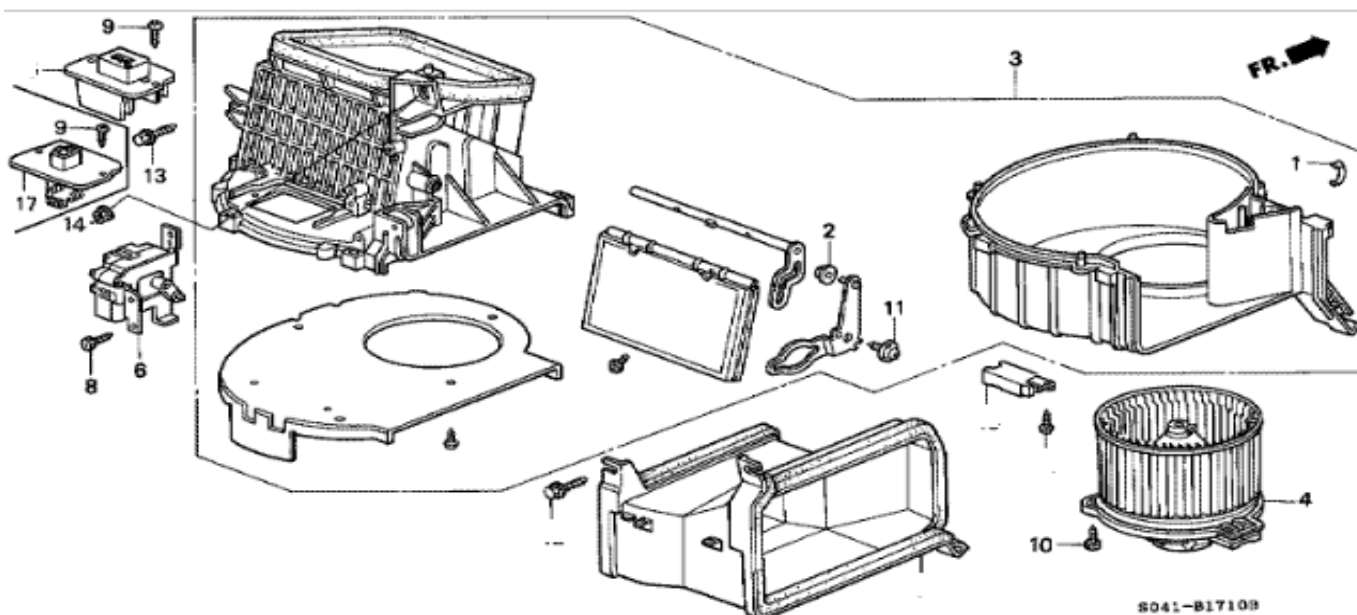


S031-B1310

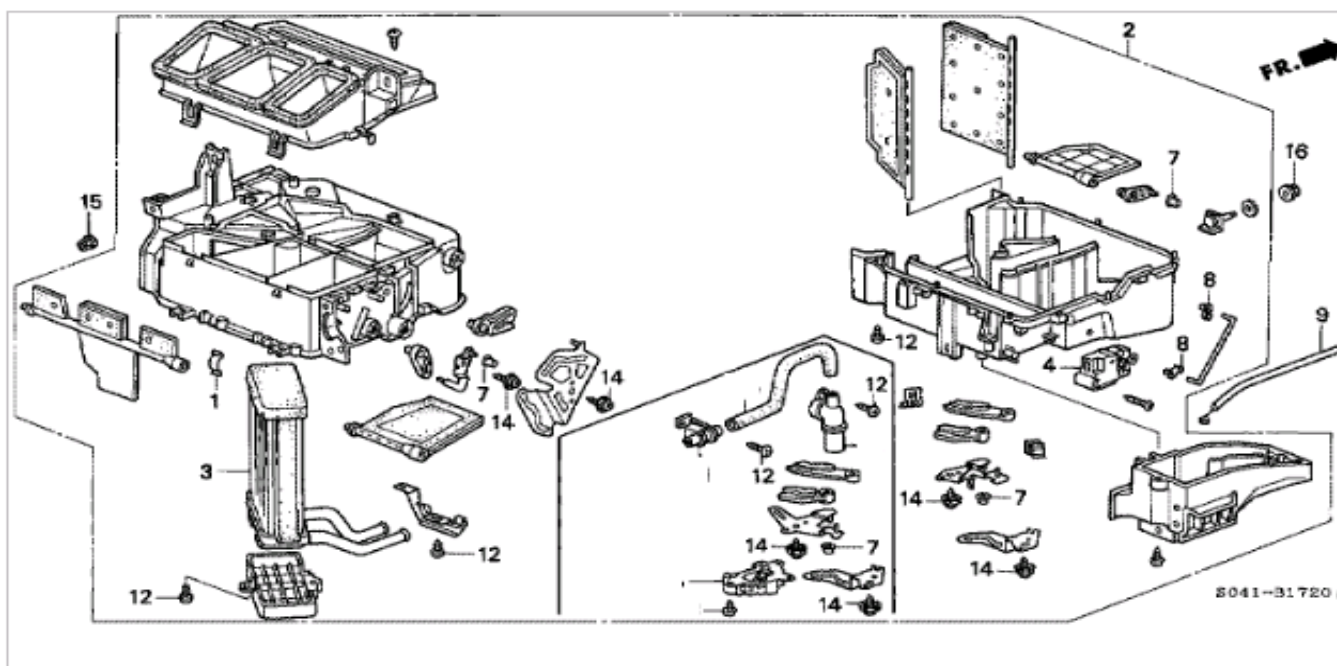
1	38206-ST7-000	BRACKET, RELAY
2	38230-S01-003	BOX ASSY., ABS FUSE
3	38231-S04-000	BRACKET, ABS FUSE BOX
4	38231-S04-961	FUSE, BLOCK (40A)
5	39790-S03-Z01	ABS UNIT
6	39792-SP0-014	RELAY ASSY., POWER (4P) (MITSUBA) (12V NO)
7	90130-SR3-003	BOLT, 5X13
8	93405-06016-08	BOLT-WASHER, 6X16
9	94050-06080	NUT, FLANGE, 6MM
10	98200-40750	FUSE, MINI (7.5A)
11	98200-42000	FUSE, MINI (20A)



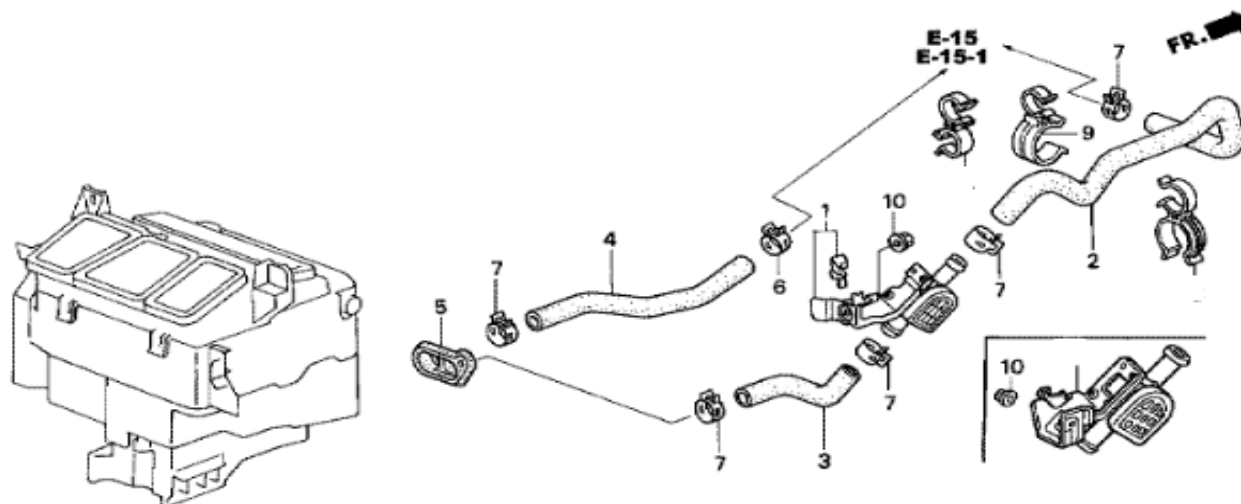
- | | | |
|----|-----------------|--|
| 1 | 32157-S04-J00 | SUB CORD, HEATER (A) (AIR CONDITIONER) |
| 2 | 32257-S04-000 | SUB CORD, HEATER (B) |
| 3 | 79500-S04-J01ZA | CONTROL ASSY., HEATER (AIR CONDITIONER) *NH1L * (NH1L BLACK) |
| 4 | 79512-S04-003 | LEVER |
| 5 | 79514-S04-003 | SLIDER |
| 6 | 79542-S04-000 | CABLE, TEMPERATURE CONTROL |
| 7 | 79550-S04-003 | GARNISH |
| 8 | 79551-S04-003 | DISPLAY, MODE CONTROL |
| 9 | 79570-SR3-003 | SWITCH ASSY., HEATER FAN |
| 10 | 79601-S04-003 | KNOB A |
| 11 | 79602-S04-003 | KNOB B |
| 13 | 79629-SR3-N02 | BULB ASSY. (AMBER) (14V-80MA) |
| 14 | 91540-S30-003 | CLIP, HARNESS BAND (NATURAL) (151.5MM) |
| 16 | 93901-24320 | SCREW, TAPPING, 4X12 |
| 17 | 93913-14420 | SCREW, TAPPING, 4X16 (PO) |



- | | | |
|----|---------------|---------------------------------|
| 1 | 39246-671-003 | CLAMP, CASE HOLD |
| 2 | 79192-SR3-003 | BUSH, LINK |
| 3 | 79305-S04-003 | BLOWER SUB ASSY. |
| 4 | 79310-SR3-003 | MOTOR ASSY., BLOWER (DENSO) |
| 6 | 79350-S04-003 | MOTOR ASSY., FRESH & RECIRCULAR |
| 8 | 90121-SR3-003 | SCREW, TAPPING, 5X12 |
| 9 | 90121-S04-003 | SCREW, TAPPING, 4X14 |
| 10 | 90132-SR3-003 | SCREW, TAPPING, 5X16 |
| 11 | 90133-SR3-003 | SCREW-WASHER, 4X16 |
| 13 | 90156-SH3-000 | BOLT-WASHER, 6X24 |
| 14 | 90321-SV4-003 | NUT-WASHER, 6MM (PAINT CUTTING) |
| 17 | 79330-SR3-003 | RESISTOR, BLOWER |

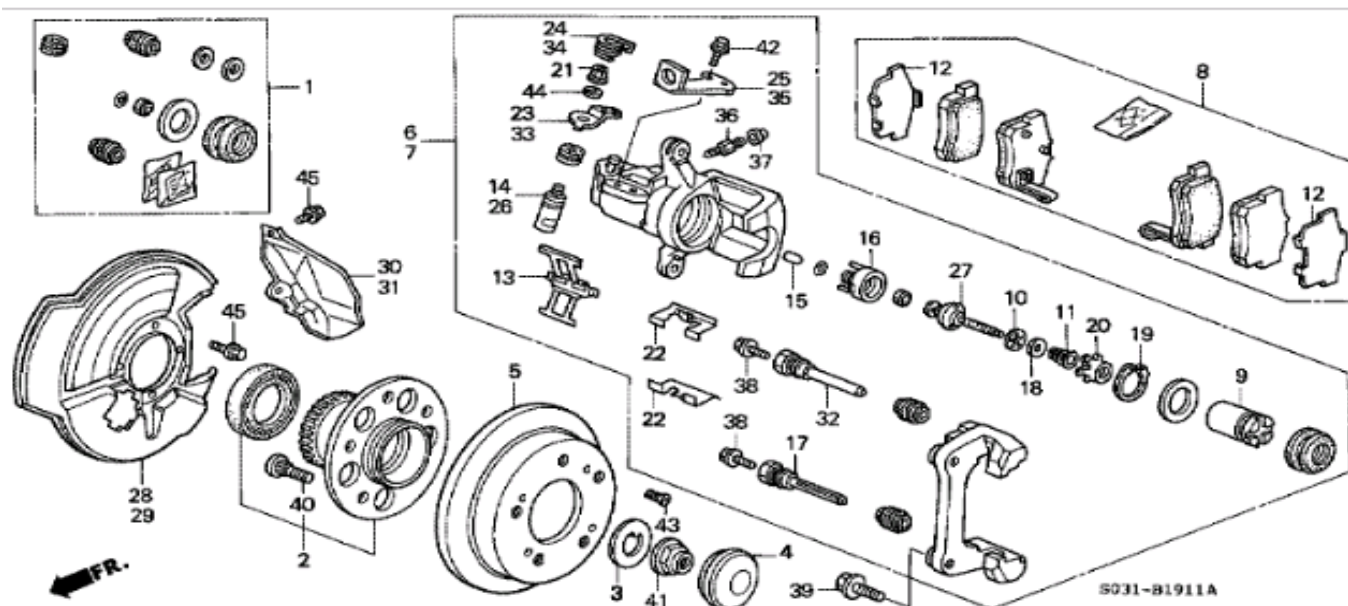


- 1 39246-671-003 CLAMP, CASE HOLD
- 2 79100-S04-J01 HEATER UNIT
- 3 79110-S04-J01 CORE COMP., HEATER
- 4 79140-S04-003 MOTOR ASSY., MODE
- 7 79192-SR3-003 BUSH, LINK
- 8 79195-SF1-003 HOLDER, ROD
- 9 79544-S04-000 CABLE, WATER VALVE CONTROL
- 12 90122-SR3-003 SCREW, TAPPING, 5X12
- 14 90133-SR3-003 SCREW-WASHER, 4X16
- 15 90321-SV4-003 NUT-WASHER, 6MM (PAINT CUTTING)
- 16 94050-08080 NUT, FLANGE, 8MM

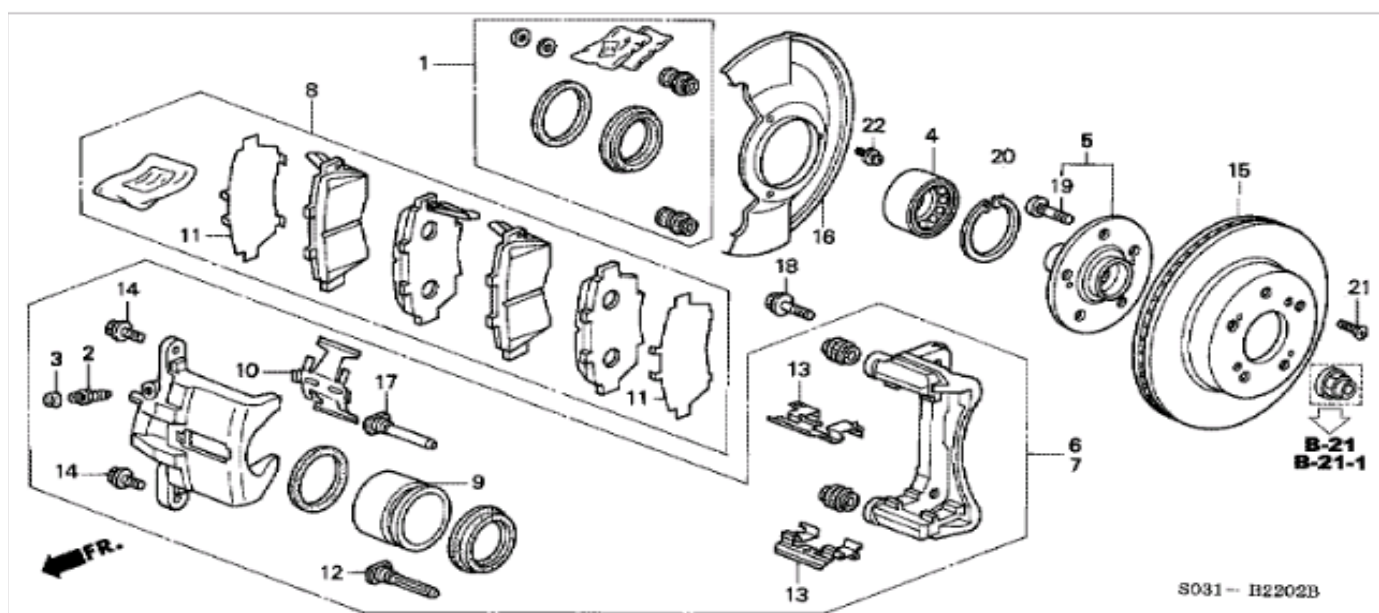


S031 - B1730B

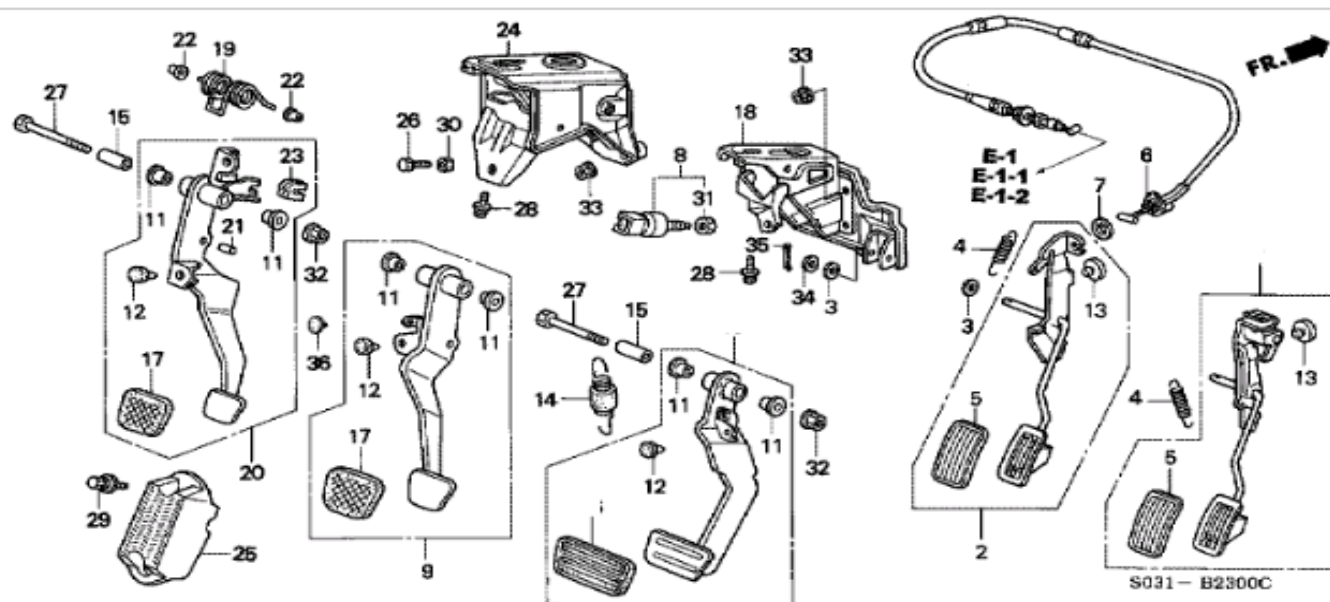
- 1 79710-SR3-003 VALVE ASSY., WATER
- 2 79721-SR3-J30 HOSE A, WATER IN.
- 3 79722-SR3-000 HOSE B, WATER IN.
- 4 79725-S03-Z00 HOSE, WATER OUTLET
- 5 79731-SR3-000 GROMMET, HEATER PIPE
- 6 91405-PK1-003 CLIP, WATER HOSE, 24MM
- 7 91405-PK1-003 CLIP, WATER HOSE, 24MM
- 9 91553-SK7-003 CLAMP, 24X39
- 10 90361-SV4-003 NUT, PAINT CUTTING, 6MM



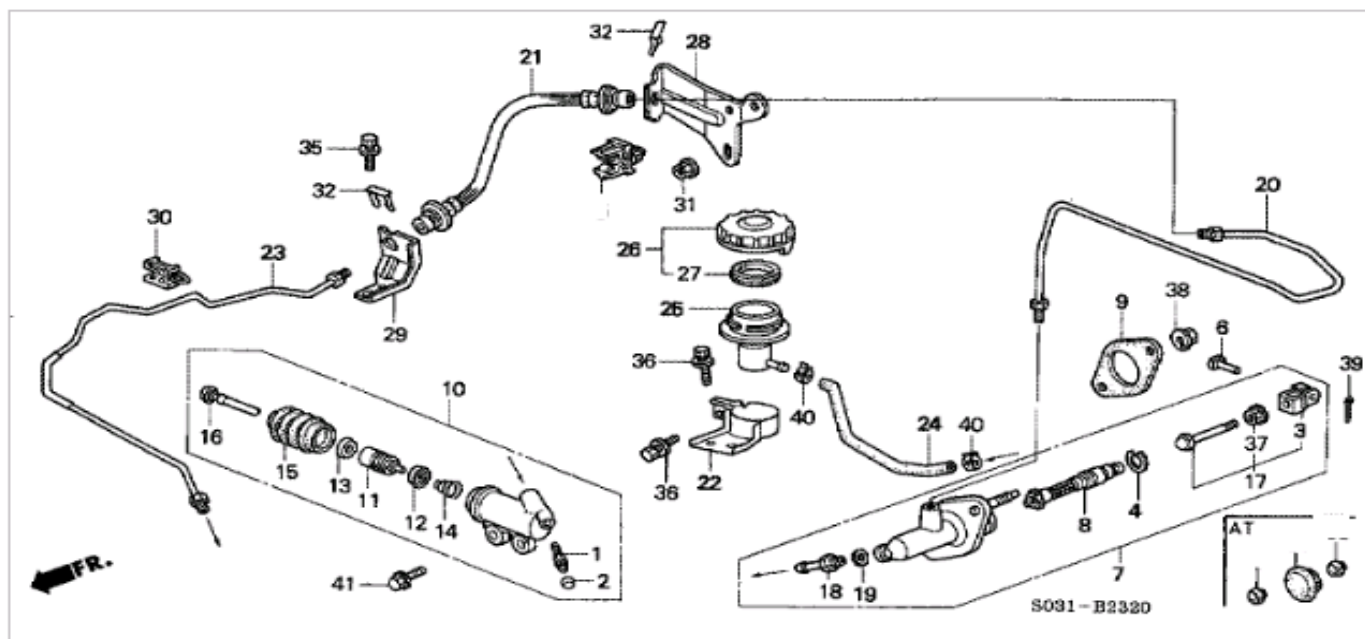
- | | | |
|----|----------------|-------------------------------------|
| 1 | 01473-SV4-000 | CALIPER SET, RR. |
| 2 | 42200-ST7-R51 | BEARING ASSY., RR. HUB UNIT |
| 3 | 42324-SB2-020 | WASHER, HUB UNIT |
| 4 | 42326-ST7-Z00 | CAP, HUB UNIT |
| 5 | 42510-ST7-R00 | DISK, RR. BRAKE |
| 6 | 43018-S03-Z02 | CALIPER SUB ASSY., R. RR. |
| 7 | 43019-S03-Z02 | CALIPER SUB ASSY., L. RR. |
| 8 | 43022-SV4-G21 | PAD SET, RR. |
| 9 | 43215-SM4-951 | PISTON ASSY. |
| 10 | 43223-SD2-932 | BEARING A |
| 11 | 43224-SD2-931 | SPRING B, ADJUSTING |
| 12 | 43224-SP0-003 | SHIM, BRAKE PAD OUTER |
| 13 | 43227-SG0-013 | SPRING, PAD |
| 14 | 43228-SD2-933 | SHAFT A (LEFT HAND SIDE) |
| 15 | 43229-SD2-931 | ROD |
| 16 | 43233-S84-A51 | PISTON COMP., SLEEVE |
| 17 | 43235-S84-A51 | PIN A |
| 18 | 43236-S04-003 | SPACER |
| 19 | 43238-SF1-003 | RING, RETAINING |
| 20 | 43241-SF1-003 | GUIDE, SPRING |
| 21 | 43243-SD2-931 | NUT, PARKING |
| 22 | 43244-SG0-003 | RETAINER |
| 23 | 43245-SH3-931 | LEVER, R. |
| 24 | 43246-SD2-931 | SPRING, R. RETURN (LEFT HAND SIDE) |
| 25 | 43247-S03-Z01 | ARM, R. |
| 26 | 43248-SD2-933 | SHAFT B (RIGHT HAND SIDE) |
| 27 | 43249-S04-003 | BOLT, ADJUSTER |
| 28 | 43253-ST3-950 | GUARD, R. RR. SPLASH |
| 29 | 43254-ST3-950 | GUARD, L. RR. SPLASH |
| 30 | 43255-ST7-R00 | PROTECTOR, R. RR. CALIPER |
| 31 | 43256-ST7-R00 | PROTECTOR, L. RR. CALIPER |
| 32 | 43262-S84-A51 | PIN B |
| 33 | 43265-SH3-931 | LEVER, L. |
| 34 | 43266-SD2-931 | SPRING, L. RETURN (RIGHT HAND SIDE) |
| 35 | 43267-S03-Z01 | ARM, L. |
| 36 | 43352-SM4-951 | SCREW, BLEEDER |
| 37 | 43353-SD5-003 | CAP, BLEEDER SCREW |
| 38 | 45240-SC2-003 | BOLT, FLANGE, 8X22 |
| 39 | 90103-SN7-003 | BOLT, FLANGE, 10X25 |
| 40 | 90113SA00** | BOLT, WHEEL (NAGOYA RASHI) * |
| 41 | 90305-692-010 | NUT, SPINDLE (22MM) |
| 42 | 93402-10025-08 | BOLT-WASHER, 10X25 |
| 43 | 93600-06014-0H | SCREW, FLAT, 6X14 |
| 44 | 94111-10800 | WASHER, SPRING, 10MM |
| 45 | 95801-06012-08 | BOLT, FLANGE, 6X12 |



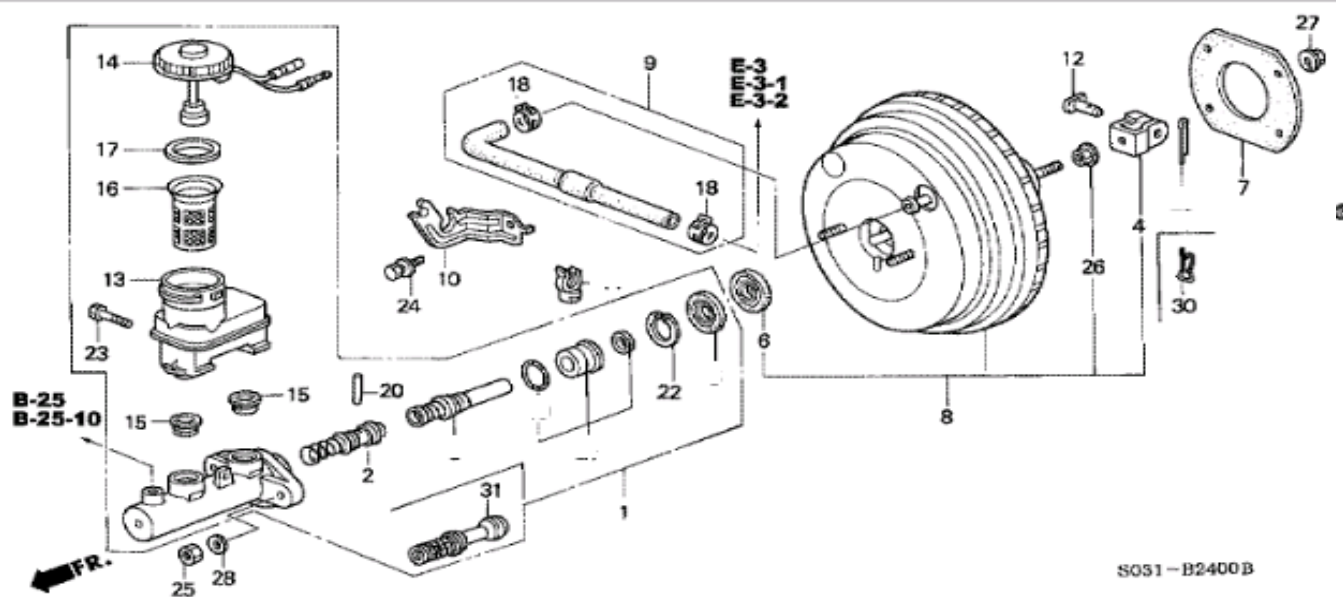
- | | | |
|----|----------------|---------------------------------|
| 1 | 01463-ST7-R00 | CALIPER SET, FR. |
| 2 | 43352-SM4-951 | SCREW, BLEEDER |
| 3 | 43353-SD5-003 | CAP, BLEEDER SCREW |
| 4 | 44300S04A0* | BEARING ASSY., FR. HUB (NTN) * |
| 5 | 44600-ST7-R00 | HUB ASSY., FR. |
| 6 | 45018-SM5-000 | CALIPER SUB ASSY., R. FR. |
| 7 | 45019-SM5-000 | CALIPER SUB ASSY., L. FR. |
| 8 | 45022-ST7-R01 | PAD SET, FR. |
| 9 | 45216-SM4-003 | PISTON |
| 10 | 45227-SM4-003 | SPRING, PAD |
| 11 | 45228-SL0-003 | SHIM, OUTER PAD |
| 12 | 45235-SL0-003 | PIN A |
| 13 | 45237-SM5-A01 | RETAINER |
| 14 | 45240-SM4-003 | BOLT, FLANGE, 10X24 |
| 15 | 45251-SZ3-000 | DISK, FR. BRAKE (15") |
| 16 | 45255-ST7-R00 | GUARD, FR. BRAKE SPLASH |
| 17 | 45262-SL0-003 | PIN B |
| 18 | 90107-SM4-000 | BOLT, CALIPER MOUNTING (12X21) |
| 19 | 90113SD490* | BOLT, WHEEL (MEIRA) * |
| 20 | 90681-SR3-A00 | CIRCLIP, SPECIAL INTERNAL, 79MM |
| 21 | 93600-06014-0H | SCREW, FLAT, 6X14 |
| 22 | 93892-05012-08 | SCREW-WASHER, 5X12 |



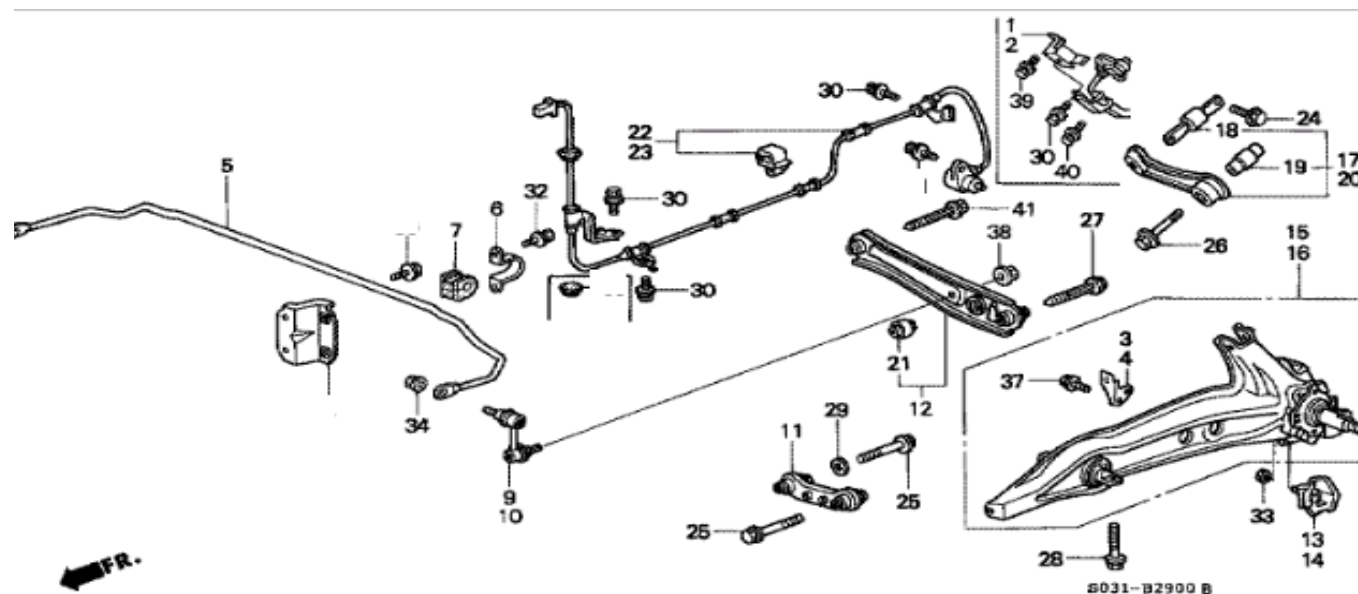
2	17800-S04-000	PEDAL COMP., ACCELERATOR
3	17812-SA7-010	WASHER, ACCELERATOR PEDAL
4	17814-SD4-670	SPRING, ACCELERATOR PEDAL
5	17816-SK7-000	COVER, ACCELERATOR PEDAL
6	17910-S03-Z02	WIRE, THROTTLE
7	17921-SA4-730	SEAL, THROTTLE CABLE
8	35350-S04-003	SWITCH ASSY., STOP
9	46500-S03-Z00	PEDAL COMP., BRAKE
11	46504-ST5-300	BUSH, PEDAL
12	46505-SA5-000	PAD, PEDAL STOPPER
13	46505-SA7-000	PAD, PEDAL STOPPER
14	46530-SR3-000	SPRING ASSY., PEDAL RETURN
15	46535-SM4-000	COLLAR, PEDAL
17	46545-SH3-000	COVER, PEDAL
18	46590-S04-000	BRACKET, PEDAL
19	46907-SR3-010	SPRING, CLUTCH ASSISTANT
20	46910-SR3-J00	PEDAL COMP., CLUTCH
21	46911-SD4-930	BUSH, PEDAL PIN
22	46981-SR3-930	BUSH A, CLUTCH ASSISTANT
23	46982-SR3-930	BUSH B, CLUTCH ASSISTANT
24	46990-SR3-000	BRACKET, CLUTCH PEDAL
25	46991-SR3-010	BRACKET, FOOTREST
26	92201-10025-0H	BOLT, HEX., 10X25
27	92201-10070-0J	BOLT, HEX., 10X70
28	93404-08016-08	BOLT-WASHER, 8X16
29	93405-06020-07	BOLT-WASHER, 6X20
30	94002-10000-0S	NUT, HEX., 10MM
31	94002-10080-0S	NUT, HEX., 10MM
32	94050-10080	NUT, FLANGE, 10MM
33	94070-08080	NUT-WASHER, 8MM
34	94102-10800	WASHER, PLAIN, 10MM
35	94201-25180	PIN, SPLIT, 2.5X18
36	46905-SK7-000	STOPPER, CLUTCH PEDAL



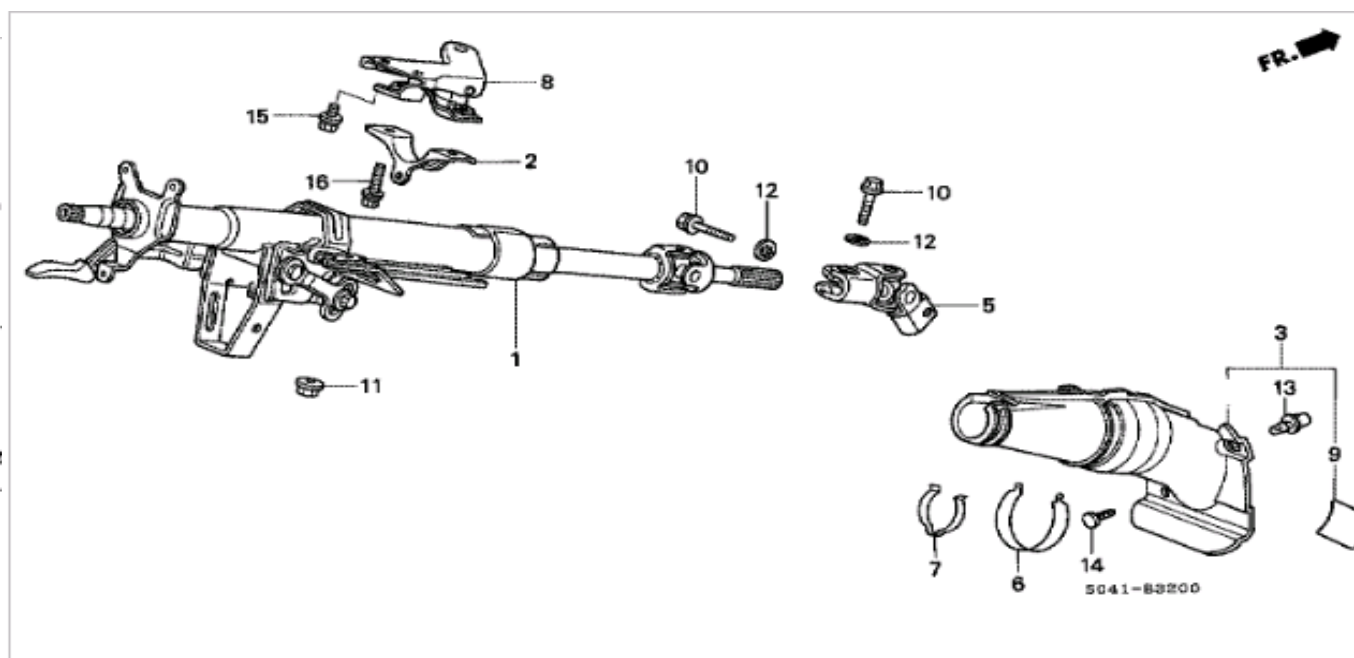
- | | | |
|----|----------------|-------------------------------|
| 1 | 43352-567-000 | SCREW, BLEEDER |
| 2 | 43353-SD5-003 | CAP, BLEEDER SCREW |
| 3 | 46151-SA5-003 | YOKE COMP. (NISSIN) |
| 4 | 46182-500-013 | CIRCLIP |
| 6 | 46912-SD4-000 | PIN, CLUTCH PEDAL |
| 7 | 46920-S04-003 | CYLINDER ASSY., CLUTCH MASTER |
| 8 | 46926-SF1-003 | PISTON ASSY. |
| 9 | 46928-SF1-000 | SEAL, CLUTCH MASTER CYLINDER |
| 10 | 46930-SR3-013 | CYLINDER ASSY., SLAVE |
| 11 | 46932-SD4-003 | PISTON, SLAVE CYLINDER |
| 12 | 46933-SD4-013 | CUP A, PISTON |
| 13 | 46934-SD4-003 | CUP B, PISTON |
| 14 | 46935-SP0-000 | SPRING, SLAVE CYLINDER |
| 15 | 46937-SR3-003 | BOOT, SLAVE CYLINDER |
| 16 | 46938-SD4-003 | ROD, PUSH |
| 17 | 46950-SL4-003 | ROD ASSY., PUSH |
| 18 | 46952-SD4-003 | JOINT, TUBE |
| 19 | 46953-SD4-003 | PACKING |
| 20 | 46960-S04-010 | PIPE COMP. A, CLUTCH |
| 21 | 46961-S04-003 | HOSE, CLUTCH |
| 22 | 46966-SR3-000 | HOLDER, TANK |
| 23 | 46970-S04-N00 | PIPE COMP. B, CLUTCH |
| 24 | 46971-S04-003 | TUBE, CLUTCH FLUID |
| 25 | 46972-SD4-003 | TANK, CLUTCH FLUID |
| 26 | 46973-SD4-003 | CAP COMP., RESERVE TANK |
| 27 | 46975-SD4-003 | SEAL, RESERVE TANK |
| 28 | 46995-S04-000 | BRACKET A, CLUTCH PIPE |
| 29 | 46996-S04-000 | BRACKET B, CLUTCH PIPE |
| 30 | 46998-S04-003 | CLIP, CLUTCH PIPE (NATURAL) |
| 31 | 90361-SV4-003 | NUT, PAINT CUTTING, 6MM |
| 32 | 90651-538-000 | CLIP, BRAKE HOSE |
| 35 | 93403-06012-08 | BOLT-WASHER, 6X12 |
| 36 | 93403-06012-08 | BOLT-WASHER, 6X12 |
| 37 | 94050-08080 | NUT, FLANGE, 8MM |
| 38 | 94070-08080 | NUT-WASHER, 8MM |
| 39 | 94201-20220 | PIN, SPLIT, 2.0X22 |
| 40 | 95002-41200-04 | CLAMP, TUBE (D12) |
| 41 | 95801-08025-08 | BOLT, FLANGE, 8X25 |



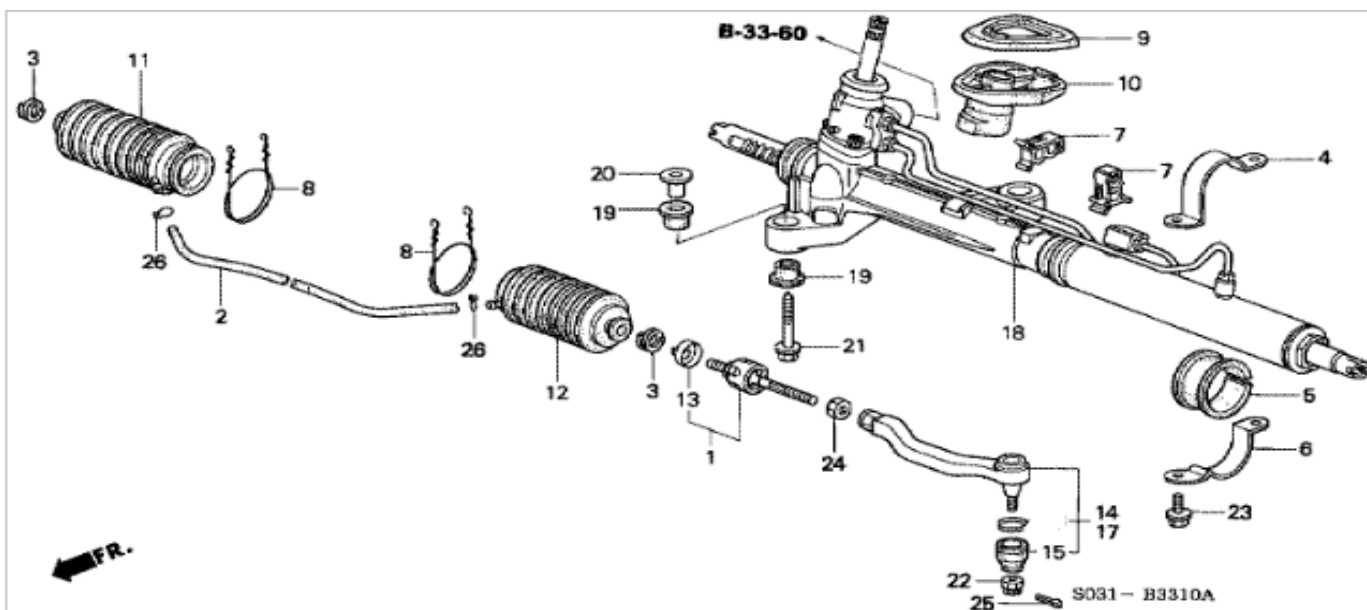
- | | | |
|----|----------------|---------------------------------|
| 1 | 46100-S03-Z01 | CYLINDER ASSY., MASTER |
| 2 | 46120-S84-A51 | PISTON ASSY., PRIMARY |
| 4 | 46151-SB2-003 | YOKE, PUSH ROD (NISSIN) |
| 6 | 46185-S04-J01 | SEAL, ROD |
| 7 | 46191-634-000 | GASKET, MASTER CYLINDER BRACKET |
| 8 | 46400-S03-Z01 | POWER ASSY., MASTER (7"+8") |
| 9 | 46402-S03-J21 | TUBE ASSY., MASTER POWER |
| 10 | 46406-S04-000 | STAY B, MASTER POWER TUBE |
| 12 | 46512-S70-000 | PIN, PEDAL |
| 13 | 46660-S47-003 | RESERVOIR COMP. |
| 14 | 46662-S04-J01 | CAP COMP., RESERVE TANK |
| 15 | 46665-S04-J01 | GROMMET |
| 16 | 46666-S04-J01 | FILTER, BRAKE RESERVOIR |
| 17 | 46669-692-003 | SEAL, RESERVE TANK |
| 18 | 53729-671-003 | CLAMP D, 15.5MM |
| 20 | 57515-S30-003 | PIN, STOP |
| 22 | 46182-S84-A51 | CIRCLIP |
| 23 | 92301-05025-0H | BOLT, RECESSED, 5X25 |
| 24 | 93402-06012-08 | BOLT-WASHER, 6X12 |
| 25 | 94001-08080-0S | NUT, HEX., 8MM |
| 26 | 94050-08080 | NUT, FLANGE, 8MM |
| 27 | 94070-08080 | NUT-WASHER, 8MM |
| 28 | 94111-08800 | WASHER, SPRING, 8MM |
| 30 | 46911-S70-003 | PIN, LOCK (8MM) |
| 31 | 46122-S84-A51 | PISTON ASSY., SECONDARY |



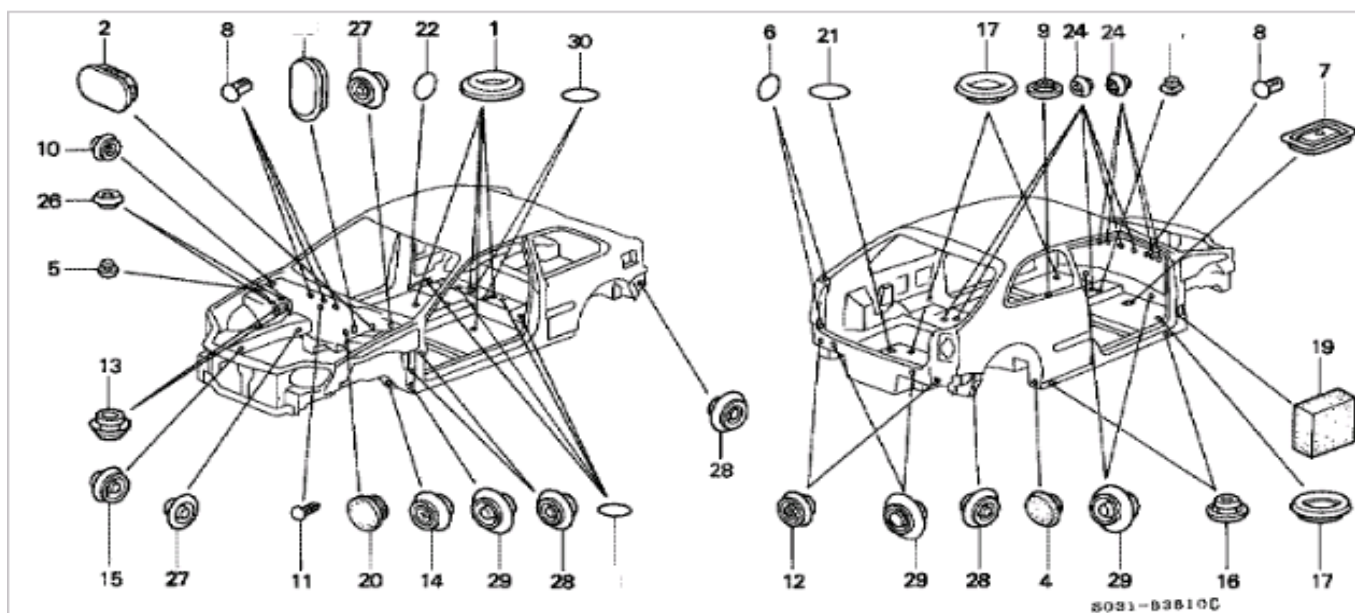
1	42534-S04-000	COVER, R. RR. (ABS)
2	42535-S04-000	COVER, L. RR. (ABS)
3	46438-SR3-010	BRACKET, R. RR. BRAKE HOSE (DISK)
4	46439-SR3-010	BRACKET, L. RR. BRAKE HOSE (DISK)
5	52300-S03-Z01	SPRING, RR. STABILIZER
6	52308-SS0-000	HOLDER, RR. STABILIZER
7	52315-S03-Z01	BUSH, RR. STABILIZER
9	52320-S04-003	LINK ASSY., R. RR. STABILIZER
10	52321-S04-003	LINK ASSY., L. RR. STABILIZER
11	52341-S03-Z00	ARM COMP., RR. COMPENSATOR
12	52350-S04-000	ARM COMP., RR. LOWER
13	52354-SR3-000	PROTECTOR, R. RR. LOWER ARM
14	52364-SR3-000	PROTECTOR, L. RR. LOWER ARM
15	52370-S03-Z10	ARM COMP., R. RR. TRAILING (DISK)
16	52371-S03-Z10	ARM COMP., L. RR. TRAILING (DISK)
17	52390-SR3-000	ARM COMP., R. RR. UPPER
18	52393-SR3-004	BUSH, UPPER ARM INNER (YAMASHITA)
19	52395-SH3-004	BUSH, RR. UPPER ARM (YAMASHITA)
20	52400-SR3-000	ARM COMP., L. RR. UPPER
21	52622-SH3-013	BUSH, RR. SHOCK ABSORBER LOWER (HOKUSHIN)
22	57470-S04-961	SENSOR ASSY., R. RR.
23	57475-S04-961	SENSOR ASSY., L. RR.
24	90117-SH3-004	BOLT, UPPER ARM, 10X30
25	90171-SR3-003	BOLT, TORQUE COMPENSATOR, 10X59
26	90172-SK7-003	BOLT, UPPER ARM, 10X68
27	90173-SR3-003	BOLT, LOWER ARM, 10X80
28	90174-SJ4-003	BOLT, TRAILING ARM BUSH, 12X60
29	90551-SH3-000	WASHER (24X10X2.3)
30	93402-06012-08	BOLT-WASHER, 6X12
32	93403-08020-08	BOLT-WASHER, 8X20
33	94050-08080	NUT, FLANGE, 8MM
34	90306-SB2-013	NUT, SELF-LOCK, 10MM (CLINCH)
37	95801-08016-08	BOLT, FLANGE, 8X16
38	90002-S10-000	NUT, FLANGE, 10MM
39	93402-06012-08	BOLT-WASHER, 6X12
40	95701-06016-08	BOLT, FLANGE, 6X16
41	90173-ST7-Z01	BOLT, LOWER ARM, 10X89



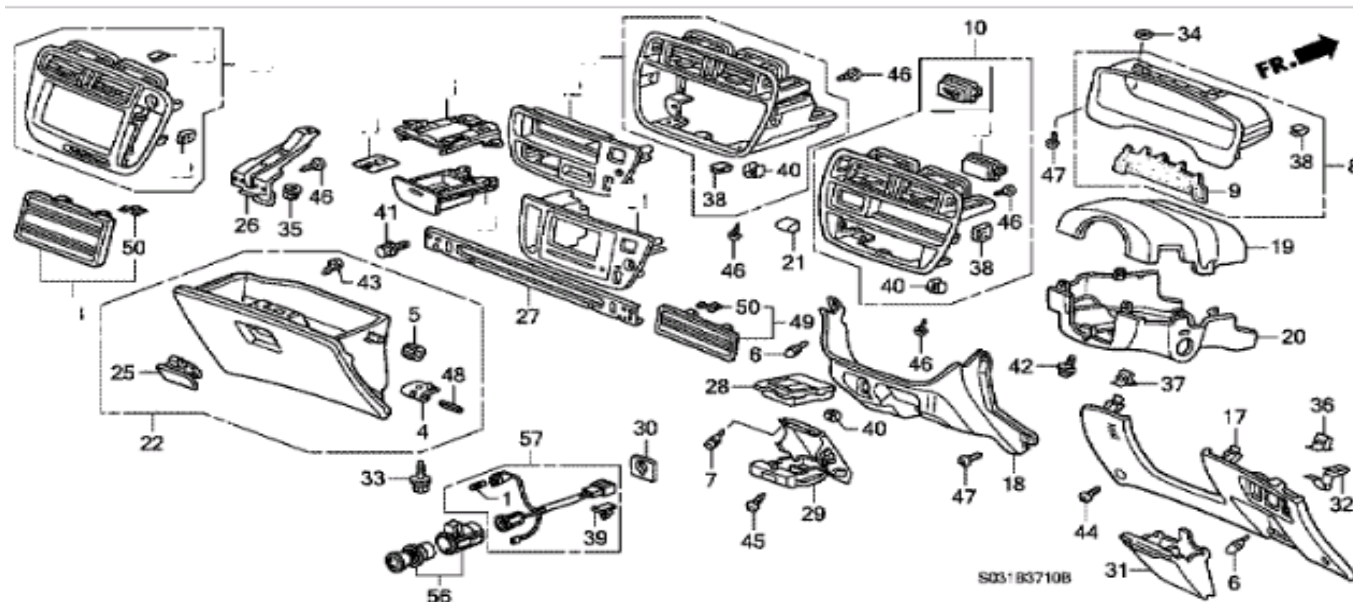
1	53200-S04-J82	COLUMN ASSY., STEERING
2	53216-SR3-000	HOLDER B, STEERING COLUMN
3	53320-S04-N80	COVER, STEERING JOINT
5	53323-S04-003	JOINT COMP. B, STEERING
6	53325-SH3-000	CLIP A, JOINT COVER
7	53326-SB0-000	CLIP B, JOINT COVER
8	53363-S04-000	PIVOT COMP., COLUMN
9	77873-SD4-N80	LABEL, STEERING COLUMN CAUTION
10	90135-SB0-003	BOLT, STEERING YOKE, 8X28 (NIPPON SEIKO)
11	90361-SR3-000	NUT, FLANGE, 8MM
12	90511-671-003	WASHER, TOOTHED LOCK
13	90654-SR3-003	CLIP, STEERING JOINT COVER
14	90665-SB2-003ZY	CLIP, TRIM, 7MM *NH120L * (NH120L STAR BLACK)
15	93403-08016-08	BOLT-WASHER, 8X16
16	93403-08030-08	BOLT-WASHER, 8X30



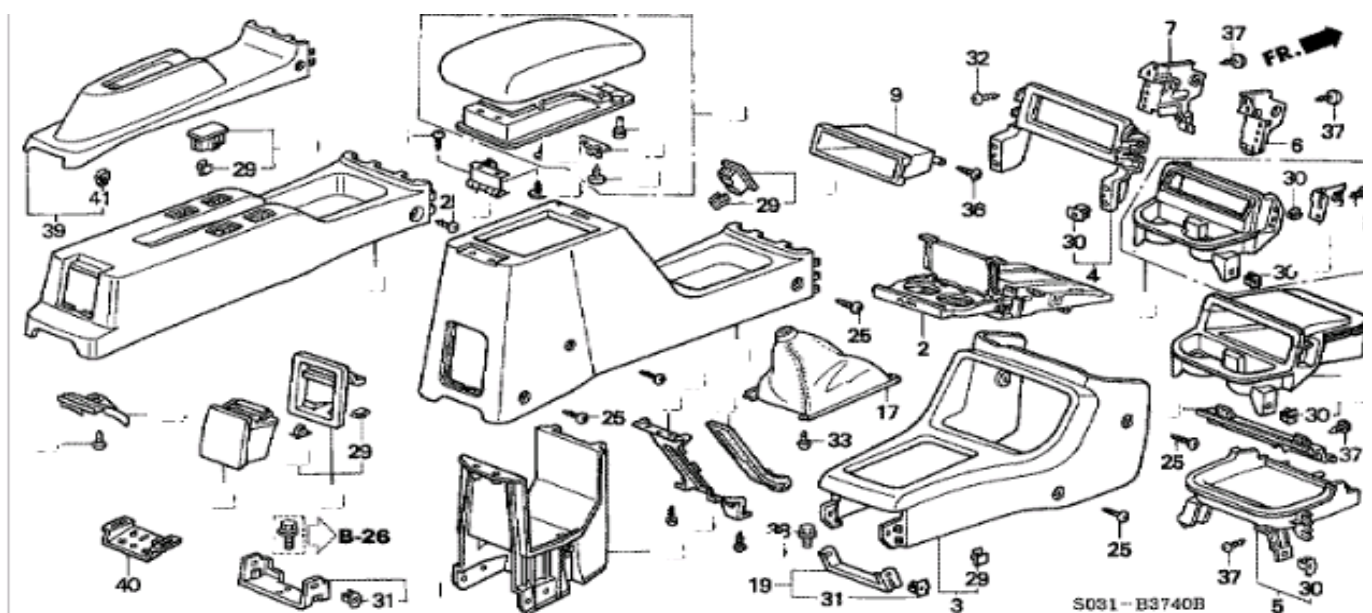
- | | | |
|----|----------------|------------------------------------|
| 1 | 53010-S04-000 | END SET, RACK |
| 2 | 53411-SH3-950 | TUBE, AIR TRANSFER |
| 3 | 53434-SD9-000 | CLIP, TIE ROD |
| 4 | 53435-S04-J50 | BRACKET, STEERING GEAR BOX UPPER |
| 5 | 53436-S04-J51 | CUSHION B, POWER STEERING GEAR BOX |
| 6 | 53438-S04-J50 | BRACKET, STEERING GEAR BOX |
| 7 | 53447-ST0-003 | CLIP, TRANSFER TUBE (NIFCO) |
| 8 | 53449-S04-J62 | BAND B, BELLOWS |
| 9 | 53501-SR3-000 | GROMMET A, STEERING |
| 10 | 53502-S04-000 | GROMMET B, STEERING |
| 11 | 53534-SR3-N52 | DUST SEAL COMP., TIE ROD |
| 12 | 53534-ST0-013 | DUST SEAL COMP., TIE ROD |
| 13 | 53536-SR3-000 | WASHER, TIE ROD LOCK |
| 14 | 53540-S04-013 | END COMP., R. TIE ROD |
| 15 | 53546-S84-003 | BOOT, TIE ROD END (NOK) |
| 17 | 53560-S04-013 | END COMP., L. TIE ROD |
| 18 | 53601-S03-Z01 | BOX COMP., POWER STEERING GEAR |
| 19 | 53685-SL0-A00 | BUSH, STEERING GEAR BOX MOUNTING |
| 20 | 53686-SH3-010 | COLLAR, STEERING GEAR BOX MOUNTING |
| 21 | 90108-SH3-003 | BOLT, GEAR BOX MOUNTING (10X55) |
| 22 | 94030-10080 | NUT, HEX., 10MM |
| 23 | 93402-10025-08 | BOLT-WASHER, 10X25 |
| 24 | 94002-14280-05 | NUT, HEX., 14MM |
| 25 | 94201-20180 | PIN, SPLIT, 2.0X18 |
| 26 | 95002-02074 | CLIP, TUBE (B7) |



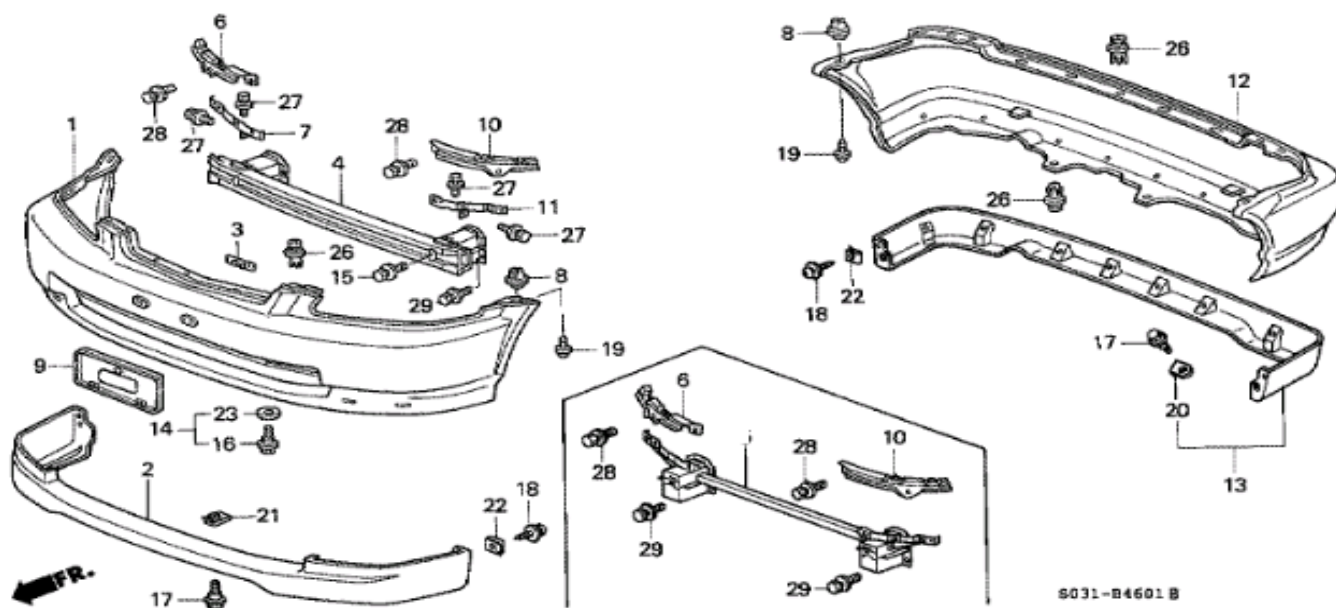
- 1 72207-SB2-000 CAP, FLOOR HOLE, 24MM
- 2 74261-S04-003 CLIP, DASHBOARD INSULATOR
- 4 82871-671-000 GROMMET, DRAIN HOLE, 25MM
- 5 83431-SA4-000 CUSHION, FR. TRUNK
- 6 85268-SA0-000 PROTECTION, TAILGATE, 20MM (CIRCLE)
- 7 90615-SR3-000 CAP, WELD HOLE, 51X77
- 8 90852-671-003 PLUG, HOLE
- 9 90856-SR3-000 PLUG, HOLE, 18MM
- 10 90860-SA5-003 PLUG, HOLE, 16MM
- 11 91504-SD5-901 CLIP, WASHER MOUTH
- 12 91603-S04-003 PLUG, HOLE, 20MM
- 13 91606-S04-000 PLUG, BLIND, 17.5MM
- 14 91607-SP0-000 GROMMET, DRAIN HOLE, 25MM
- 15 91610-SB2-003 PLUG, HOLE, 16.7MM (BLACK)
- 16 91613-SR3-003 GROMMET, SUB FRAME, 15MM
- 17 91615-SH3-000 CAP, FLOOR HOLE, 49MM
- 19 91616-S04-000 BLOCK, FR. PILLAR INNER LOWER
- 20 91617-SB6-000 GROMMET, WASHER HOSE, 32MM
- 21 91617-SH3-000 SEAL, HOLE
- 22 91619-SE0-000 SEAL, DOOR HOLE, 30MM (BLACK)
- 24 95550-07000 PLUG, BLIND, 7MM
- 26 95550-12000 PLUG, BLIND, 12MM
- 27 95550-18000 PLUG, BLIND, 18MM
- 28 95550-20000 PLUG, BLIND, 20MM
- 29 95550-25000 PLUG, BLIND, 25MM
- 30 91606-SE0-000 SEAL, 20X20



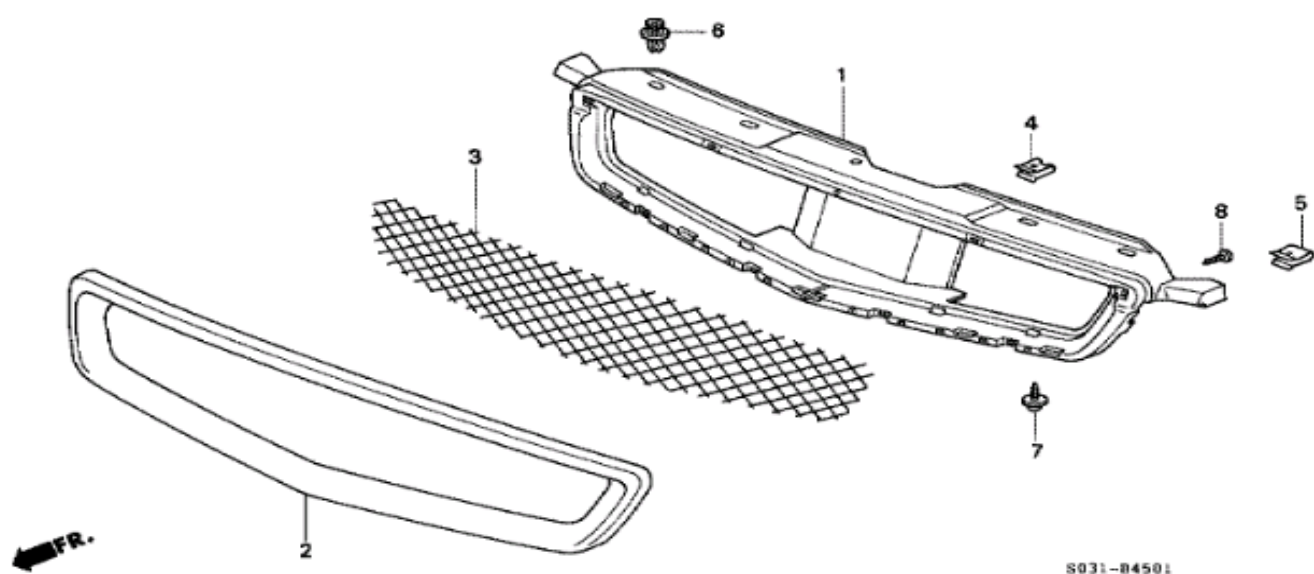
1	35505-S04-003	BULB (14V 1.4W)
4	66405-S04-010	STAY, GLOVE BOX HINGE
5	66417-SB3-670	RUBBER, GLOVE BOX STOPPER
6	66418-SB2-000	STOPPER, GLOVE BOX LID
7	66418-S04-000	STOPPER
8	77200-S04-000ZA	VISOR ASSY., INNER *NH1L * (NH1L BLACK)
9	77202-S04-G00	BLIND, COLUMN
10	77255-S04-Z01ZA	PANEL ASSY., CENTER *TCARBON * (TCARBON CARBON)
17	77301-S04-000ZA	COVER, INSTRUMENT DRIVER LOWER *NH167L * (NH167L GRAPHITE BLACK)
18	77311-S04-000ZA	COVER, INSTRUMENT CENTER LOWER *NH167L * (NH167L GRAPHITE BLACK)
19	77350-S04-000ZA	COVER ASSY., COLUMN UPPER *NH167L * (NH167L GRAPHITE BLACK)
20	77360-S04-N80ZA	COVER ASSY., COLUMN LOWER *NH167L * (NH167L GRAPHITE BLACK)
21	77429-S04-G00	KNOB, UPPER VENT
22	77500-S04-013ZA	BOX ASSY., GLOVE *NH167L * (NH167L GRAPHITE BLACK)
25	77540-S04-003ZD	LOCK ASSY., GLOVE BOX *NH167L * (NH167L GRAPHITE BLACK)
26	77541-S04-020	STRIKER ASSY., GLOVE BOX
27	77551-S04-010	FRAME, GLOVE BOX
28	77710-S04-003	CASE COMP., INNER
29	77715-S04-003ZB	CASE COMP., OUTER *NH167L * (NH167L GRAPHITE BLACK)
30	77721-S04-000ZA	PROTECTOR, CIGARETTE LIGHTER *NH167L * (NH167L GRAPHITE BLACK)
31	77750-S04-000ZA	POCKET, DRIVER *NH167L * (NH167L GRAPHITE BLACK)
32	77752-SF4-000	SPRING, COIN POCKET
33	90140-SH3-003	BOLT-WASHER, 5X18
34	90302-SA4-003	NUT, SPRING, 4MM
35	90321-SP0-A80	NUT-WASHER, 6MM
36	90609-SG0-003	CLIP, PILLAR GARNISH
37	90609-SL9-900	CLIP, INSTRUMENT LOWER
38	90666-SD4-003	CLIP, FITTING
39	91555-SM4-003	CLIP, COUPLER (RED)
40	91640-SM4-003	GROMMET, SCREW, 4MM
41	93401-05010-08	BOLT-WASHER, 5X10
42	93891-05010-07	SCREW-WASHER, 5X10
43	93903-34480	SCREW, TAPPING, 4X16
44	93903-44480	SCREW, TAPPING, 4X16
45	93913-24480	SCREW, TAPPING, 4X16 (PO)
46	93913-14420	SCREW, TAPPING, 4X16 (PO)
47	93913-14480	SCREW, TAPPING, 4X16 (PO)
48	94305-40222	PIN, SPRING, 4X22
49	77230-SM4-G00	LID ASSY., AUDIO HOLE
50	90650-SE3-000	CLIP, RADIO PANEL
56	39600-SW3-305	LIGHTER UNIT, CIGARETTE
57	39628-S04-305	CORD ASSY.



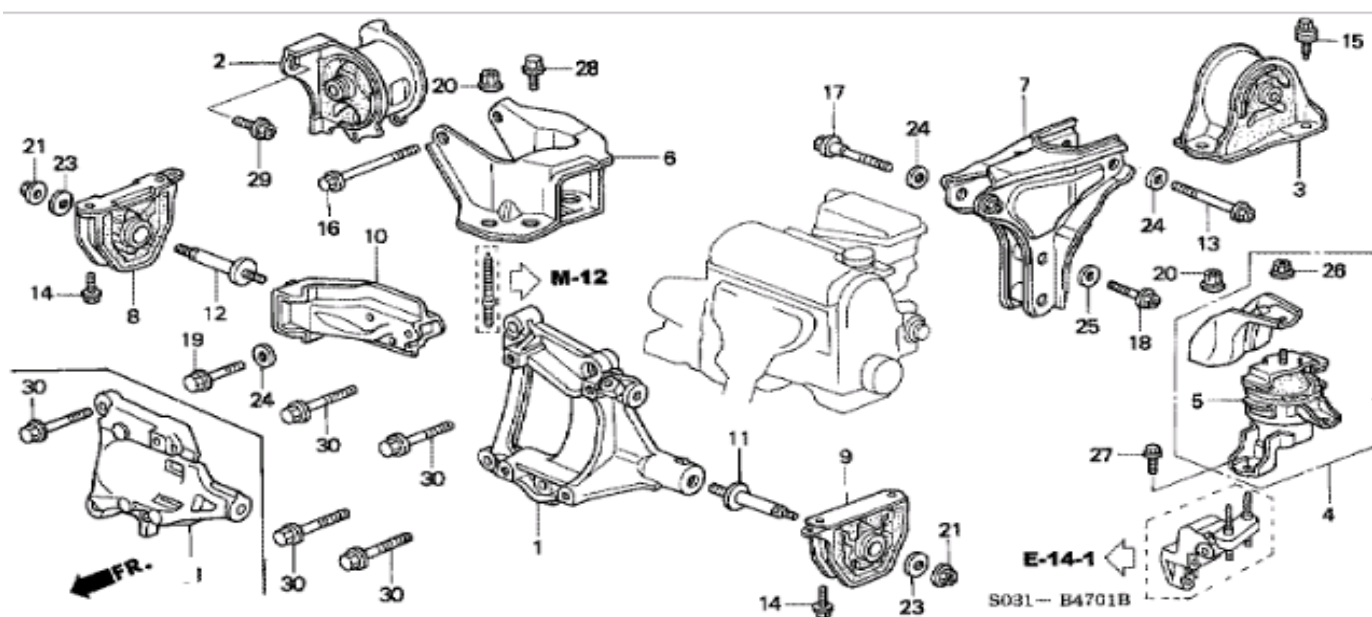
2	77230-S04-003ZA	CUP HOLDER ASSY. *NH1L * (NH1L BLACK)
3	77291-S04-000ZA	CONSOLE, FR. *NH167L * (NH167L GRAPHITE BLACK)
4	77293-S04-000ZA	PANEL, FR. CONSOLE *NH1L * (NH1L BLACK)
5	77294-S04-000ZA	TRAY, FR. CONSOLE *NH1L * (NH1L BLACK)
6	77296-S04-000ZZ	BRACKET, R. FR. CONSOLE
7	77297-S04-000ZZ	BRACKET, L. FR. CONSOLE
9	77299-S04-000ZA	POCKET, RADIO PANEL *NH1L * (NH1L BLACK)
17	83414-S04-000ZA	BOOT, CHANGE LEVER *NH1L * (NH1L BLACK)
19	83425-S03-Z00ZZ	BRACKET, CONSOLE
25	90137-SH3-000	SCREW, TAPPING, 4X16
29	90666-SD4-003	CLIP, FITTING
30	91640-SM4-003	GROMMET, SCREW, 4MM
31	91641-SM4-003	GROMMET, SCREW, 4MM
32	93903-44480	SCREW, TAPPING, 4X16
33	93913-14220	SCREW, TAPPING, 4X12
36	93913-15420	SCREW, TAPPING, 5X16 (PO)
37	93913-24220	SCREW, TAPPING, 4X12
38	95701-06012-08	BOLT, FLANGE, 6X12
39	83400-S03-Z00ZA	CONSOLE ASSY., RR. *NH167L * (NH167L GRAPHITE BLACK)
40	83446-ST7-Z00ZZ	BRACKET, PARKING BRAKE COVER
41	90666-S84-A01	CLIP, SNAP FITTING



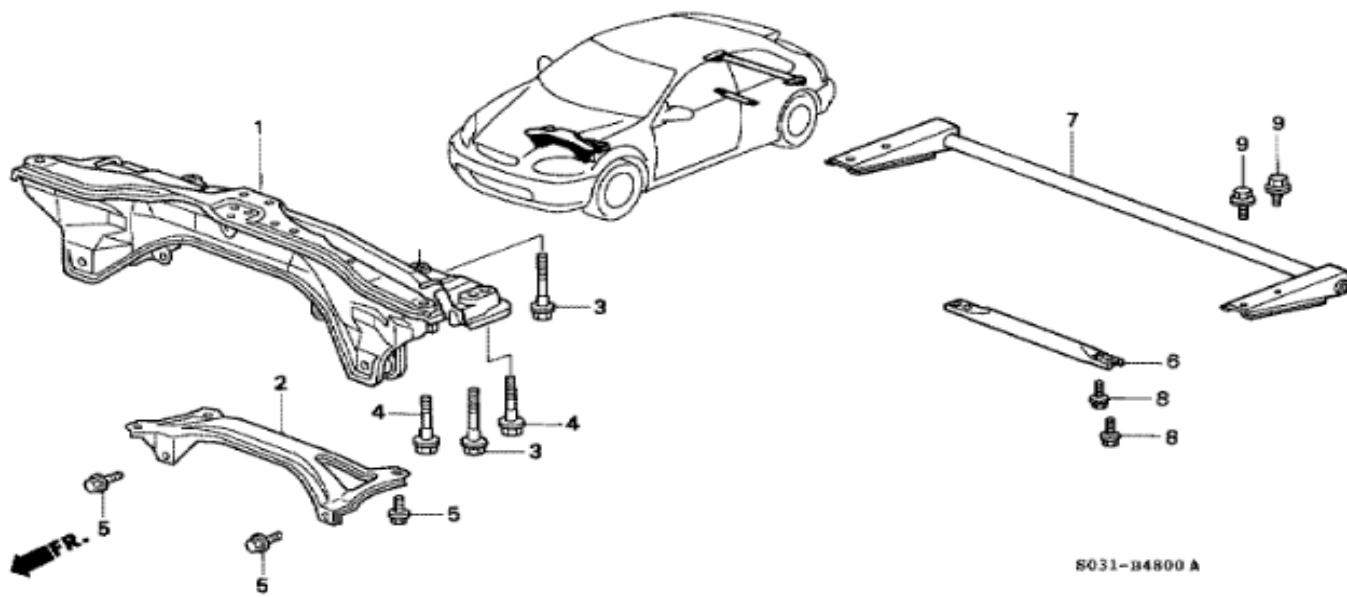
- | | | |
|----|-----------------|---|
| 1 | 71101-S04-A00ZF | FACE, FR. BUMPER *NH0 * (NH0 CHAMPIONSHIP WHITE) |
| 2 | 71110-S03-Z00ZA | SPOILER, FR. BUMPER UNDER *NH0 * (NH0 CHAMPIONSHIP WHITE) |
| 3 | 71113-SH2-000 | NUT, LICENSE PLATE |
| 4 | 71130-S03-Z00ZZ | BEAM COMP., FR. BUMPER |
| 6 | 71141-S04-000 | STIFFENER, R. FR. BUMPER SIDE |
| 7 | 71142-S01-A00ZZ | STAY A, R. FR. BUMPER SIDE STIFFENER |
| 8 | 71144-SR3-013 | GROMMET, BUMPER SIDE |
| 9 | 71145-S04-000 | BRACKET, FR. LICENSE PLATE |
| 10 | 71191-S04-000 | STIFFENER, L. FR. BUMPER SIDE |
| 11 | 71192-S01-A00ZZ | STAY A, L. FR. BUMPER SIDE STIFFENER |
| 12 | 71501-S03-Z00ZA | FACE, RR. BUMPER *NH0 * (NH0 CHAMPIONSHIP WHITE) |
| 13 | 71510-S03-Z00ZA | SPOILER, RR. BUMPER UNDER *NH0 * (NH0 CHAMPIONSHIP WHITE) |
| 14 | 90101-SE0-010 | BOLT ASSY. B, BUMPER |
| 15 | 90104-SV4-000 | BOLT-WASHER, 8X25 |
| 16 | 90109-SE0-003 | BOLT B, BUMPER |
| 17 | 90111-SM4-003 | BOLT, BUMPER |
| 18 | 90114-SE0-000 | SCREW, TAPPING, 5X20 |
| 19 | 90121-SA7-000 | SCREW, TAPPING, 5X16 |
| 20 | 90305-SH3-000 | NUT, AIR SPOILER CLIP |
| 21 | 90306-SF1-000 | NUT, CLIP, 6MM |
| 22 | 90345-S04-000 | NUT, SUSPENSION, 5MM |
| 23 | 90540-SA7-000 | WASHER, BUMPER |
| 26 | 91503-SP0-013 | CLIP A, BUMPER |
| 27 | 93401-06012-08 | BOLT-WASHER, 6X12 |
| 28 | 93405-06016-08 | BOLT-WASHER, 6X16 |
| 29 | 93405-08025-08 | BOLT-WASHER, 8X25 |



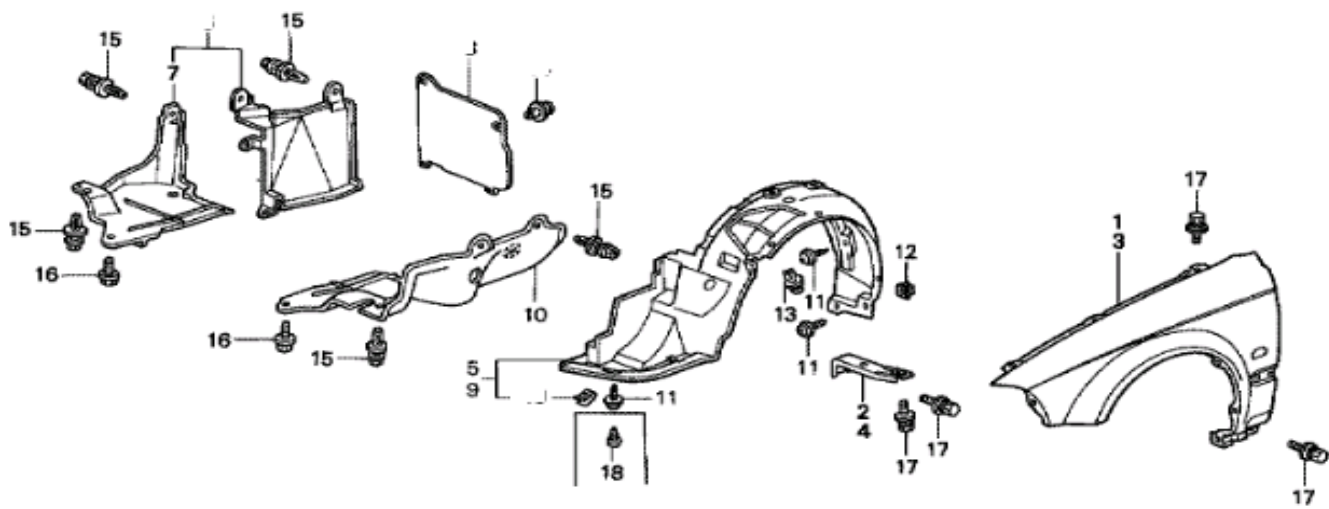
1	71121-S03-Z01	BASE, FR. GRILLE
2	71122-S03-Z01ZA	MOLDING, FR. GRILLE *NH0 * (NH0 CHAMPIONSHIP WHITE)
3	71123-S03-Z01	MESH, FR. GRILLE
4	90331-SD5-003	NUT, SPRING, 5MM
5	90653-SP0-000	CLIP, SPOILER
6	91503-SP0-013	CLIP A, BUMPER
7	93903-252G0	SCREW, TAPPING, 5X12
8	93903-423J0	SCREW, TAPPING, 3X12



1	38930-P73-A00	BRACKET, COMPRESSOR
2	50805-S04-000	RUBBER, TRANSMISSION MOUNTING
3	50810-ST7-Z00	INSULATOR, RR. ENGINE MOUNTING RUBBER (MT)
4	50820-S04-013	RUBBER ASSY., ENGINE SIDE MOUNTING
5	50824-S04-013	RUBBER ASSY., MOUNT
6	50825-S04-000	BRACKET, TRANSMISSION MOUNTING
7	50827-S04-N10	BRACKET, ENGINE RR. MOUNTING
8	50841-ST7-Z00	RUBBER, R. FR. STOPPER INSULATOR (MT)
9	50842-ST7-Z00	RUBBER, L. FR. STOPPER INSULATOR (MT)
10	50843-S10-J00	BRACKET, R. FR. STOPPER (MT)
11	90131-ST7-000	BOLT, L. FR. STOPPER
12	90133-S04-000	BOLT, R. FR. STOPPER
13	90165-SM4-020	BOLT, FLANGE, 12X101
14	90166-SR3-000	BOLT, FLANGE, 10X30
15	90176-S10-000	BOLT-WASHER, 10X49.5
16	90183-SR3-000	BOLT, FLANGE, 12X100
17	90186-SL4-000	BOLT, FLANGE, 12X67
18	90188-SR3-010	BOLT, FLANGE, 14X67
19	90190-SR3-000	BOLT, FLANGE, 12X64
20	90371-SR3-000	NUT, FLANGE, 12MM
21	90372-SR3-003	NUT, FLANGE, 12MM
23	90504-SR3-010	WASHER, FR. STOPPER
24	90505-SB2-000	WASHER, SIDE MOUNTING
25	90505-SR3-000	WASHER, RR. BRACKET, 14MM
26	94050-12080	NUT, FLANGE, 12MM
27	95701-10020-08	BOLT, FLANGE, 10X20
28	95701-12020-08	BOLT, FLANGE, 12X20
29	95701-12025-08	BOLT, FLANGE, 12X25
30	95801-10045-08	BOLT, FLANGE, 10X45

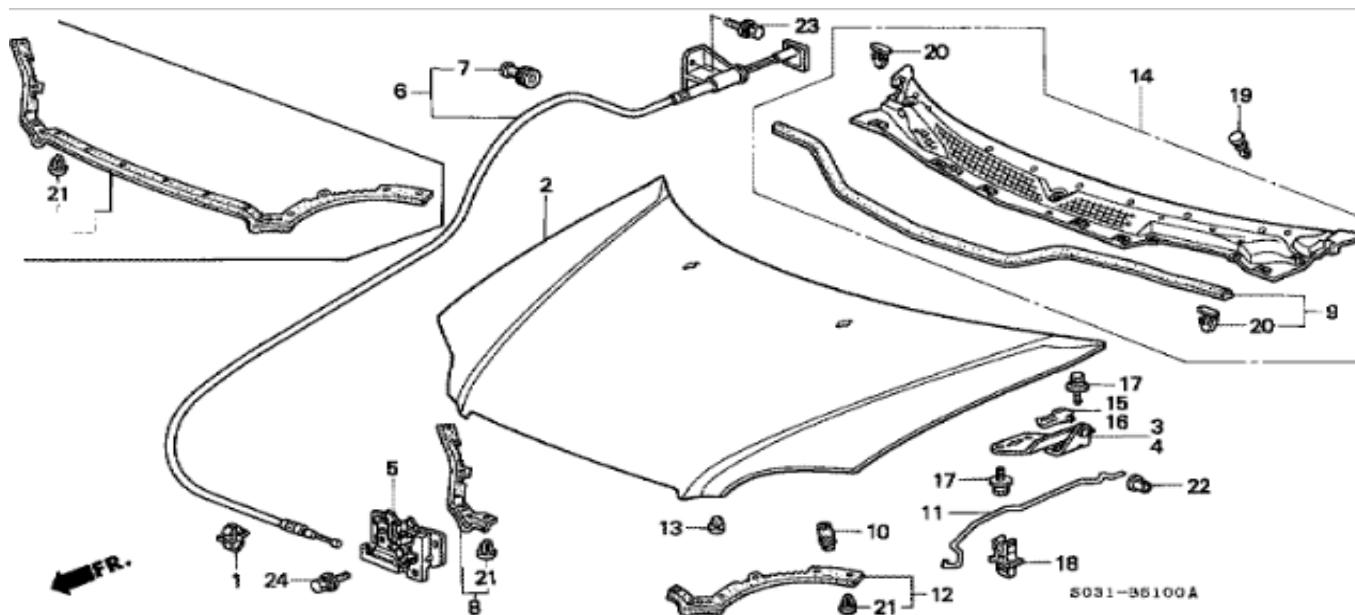


- | | | |
|---|-----------------|--------------------------------|
| 1 | 50200-S03-J00 | BEAM, RR. |
| 2 | 50210-S04-000 | STIFFENER, RR. BEAM |
| 3 | 90161-S04-000 | BOLT, FLANGE, 14X100 |
| 4 | 90162-S04-000 | BOLT, FLANGE, 14X83 |
| 5 | 95701-10016-08 | BOLT, FLANGE, 10X16 |
| 6 | 74350-S03-Z00 | ROD, RR. LOWER ARM PERFORMANCE |
| 7 | 74370-S03-Z00ZZ | ROD, RR. FRAME END PERFORMANCE |
| 8 | 93407-08016-08 | BOLT-WASHER, 8X16 |
| 9 | 95701-12020-08 | BOLT, FLANGE, 12X20 |

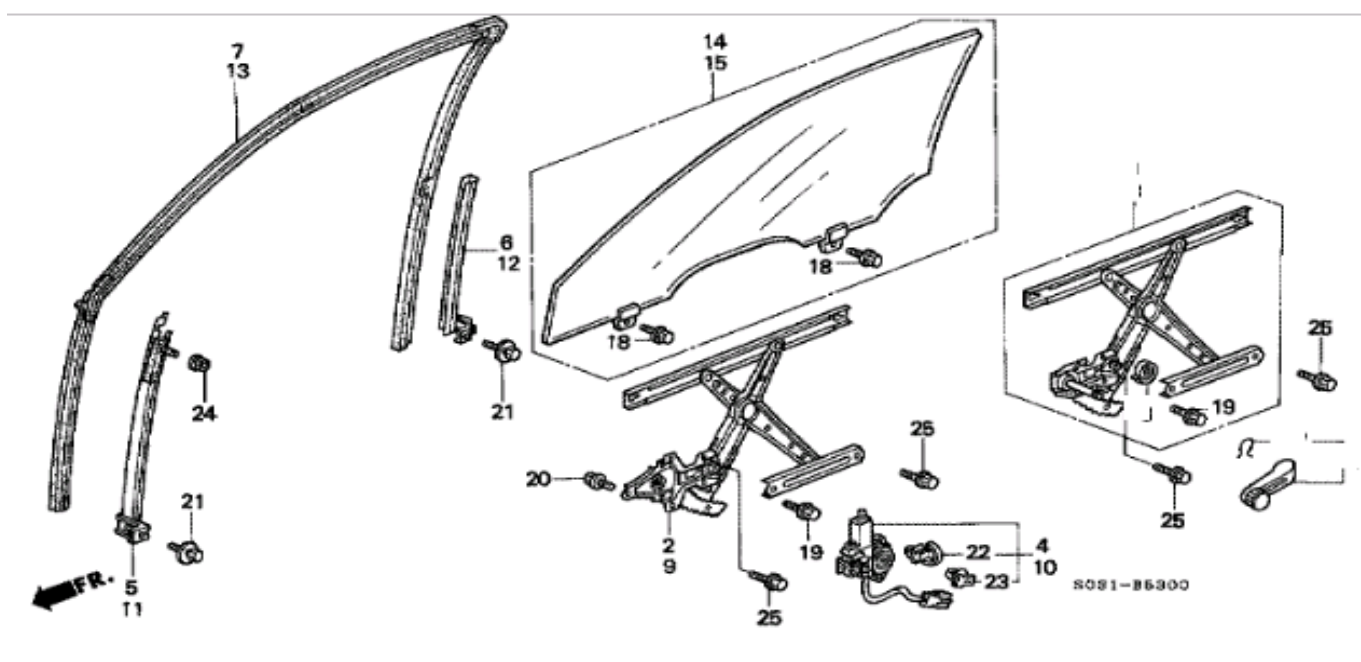


5031-65000 C

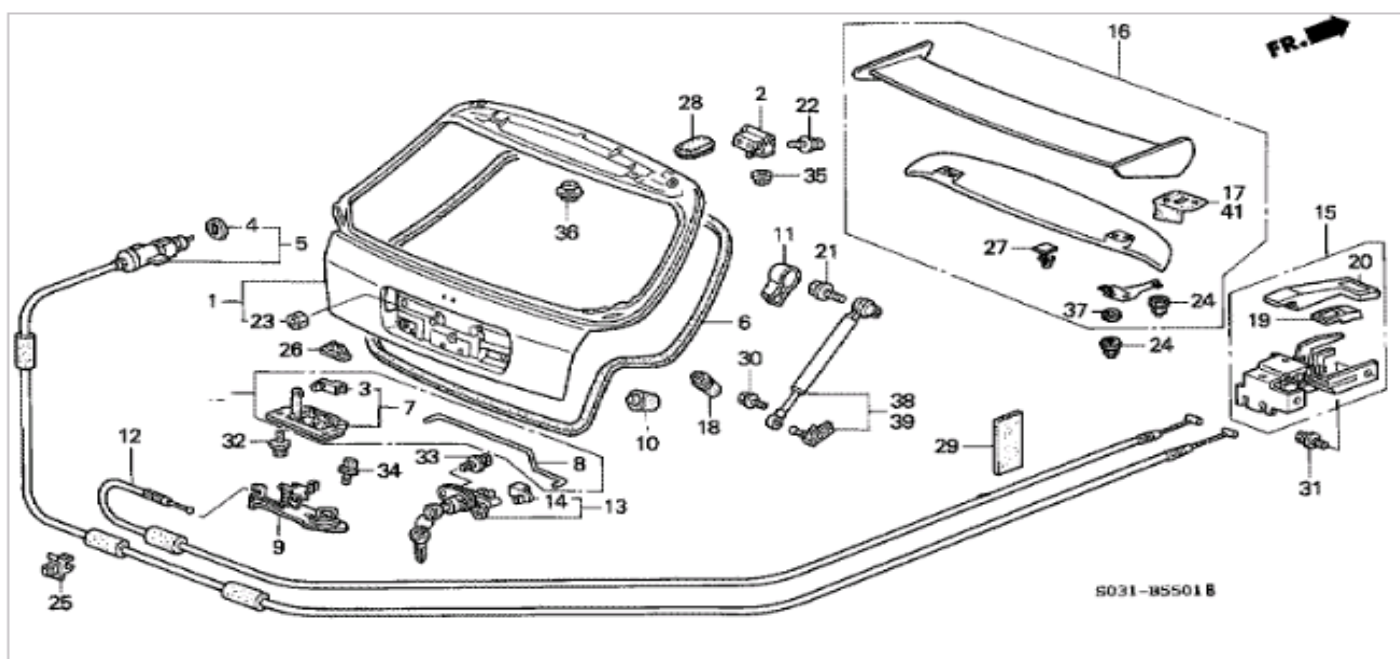
- | | | |
|----|-----------------|--|
| 1 | 60211-S04-000ZZ | PANEL, R. FR. FENDER |
| 2 | 60212-S04-000ZZ | STAY, R. FR. FENDER |
| 3 | 60261-S04-000ZZ | PANEL, L. FR. FENDER |
| 4 | 60262-S04-000ZZ | STAY, L. FR. FENDER |
| 5 | 74101-S04-010 | FENDER, R. FR. INNER |
| 7 | 74115-SR3-010 | GUARD, R. FR. SPLASH |
| 9 | 74151-S04-000 | FENDER, L. FR. INNER |
| 10 | 74165-SR3-010 | GUARD, L. FR. SPLASH |
| 11 | 90126-SR4-000 | SCREW-WASHER, 5X16 |
| 12 | 90682-SB0-003 | GROMMET, SCREW, 5MM |
| 13 | 91501-S04-003 | CLIP, INNER FENDER |
| 15 | 91516-SK7-013 | CLIP, UNDER COVER |
| 16 | 93405-06016-04 | BOLT-WASHER, 6X16 |
| 17 | 93405-06016-08 | BOLT-WASHER, 6X16 |
| 18 | 93903-15380 | SCREW, TAPPING, 5X16 (RIGHT HAND SIDE) |



- | | | |
|----|-----------------|---------------------------------------|
| 1 | 90654-SA4-003 | CLIP, WIRE HARNESS, 6MM (WHITE) |
| 2 | 60100-S03-Z00ZZ | HOOD COMP., ENGINE |
| 3 | 60120-ST0-000ZZ | HINGE COMP., R. HOOD |
| 4 | 60170-ST0-000ZZ | HINGE COMP., L. HOOD |
| 5 | 74120-S04-003 | LOCK ASSY., HOOD (TOYOSYA) |
| 6 | 74130-S04-003ZA | WIRE ASSY., HOOD *NH1L * (NH1L BLACK) |
| 7 | 74134-SH3-003 | GROMMET, HOOD WIRE |
| 8 | 74142-S04-000 | RUBBER, R. HOOD SEAL |
| 9 | 74143-S04-000 | RUBBER, HOOD RR. SEAL |
| 10 | 74144-SR3-000 | CUSHION, HOOD |
| 11 | 74145-S04-000 | STAY, HOOD OPENER |
| 12 | 74152-S04-000 | RUBBER, L. HOOD SEAL |
| 13 | 74177-SD4-000 | CUSHION A, HOOD |
| 14 | 74200-S04-000 | COWL TOP ASSY. |
| 15 | 74214-S04-000 | COVER, R. HOOD HINGE |
| 16 | 74264-S04-000 | COVER, L. HOOD HINGE |
| 17 | 90127-SA0-000 | BOLT-WASHER, 6X16 |
| 18 | 90672-SJ4-013 | HOLDER, ROD |
| 19 | 91508-SR3-000 | CLIP, COWL TOP (BLACK) |
| 20 | 91515-SR3-000 | CLIP, RR. HOOD |
| 21 | 91518-SM4-003 | CLIP, TRUNK MOLDING |
| 22 | 91604-SD2-013 | GROMMET, HOOD STAY |
| 23 | 93401-06016-08 | BOLT-WASHER, 6X16 |
| 24 | 93405-06016-04 | BOLT-WASHER, 6X16 |



2	72211-S03-J01	REGULATOR, R. FR. DOOR POWER
4	72215-SR3-003	MOTOR ASSY., R. WINDOW
5	72230-S03-003	SASH, R. FR. DOOR FR. LOWER
6	72231-S03-003	SASH, R. FR. DOOR CENTER LOWER
7	72235-S03-003	RUNCHANNEL, R. FR. DOOR
9	72251-S03-J01	REGULATOR, L. FR. DOOR POWER
10	72715-S10-003	MOTOR ASSY., WINDOW (LEFT HAND SIDE)
11	72270-S03-003	SASH, L. FR. DOOR FR. LOWER
12	72271-S03-003	SASH, L. FR. DOOR CENTER LOWER
13	72275-S03-003	RUNCHANNEL, L. FR. DOOR
14	73300-S03-Z10	GLASS ASSY., R. FR. DOOR (GREEN) (AP TECH)
15	73350-S03-Z10	GLASS ASSY., L. FR. DOOR (GREEN) (AP TECH)
18	90011-896-000	BOLT, FLANGE, 6X8
19	90115-SG0-003	BOLT, FLANGE, 6MM
20	90120-SE3-003	BOLT, FLANGE, 6X12
21	90126-SS0-000	BOLT-WASHER, 6X16
22	91540-SV4-003	CLIP, HARNESS BAND (NATURAL) (145.2MM)
23	91555-SM4-003	CLIP, COUPLER (RED)
24	94050-06080	NUT, FLANGE, 6MM
25	95701-06010-08	BOLT, FLANGE, 6X10



- | | |
|--------------------|---|
| 1 68100-S03-Z00ZZ | TAILGATE COMP. |
| 2 68210-S03-000ZZ | HINGE COMP., TAILGATE |
| 3 72134-SP0-000 | SNAP D (YELLOW) |
| 4 73219-693-951 | SEAL, FUEL LID OPENER (GREEN) |
| 5 74411-S03-003 | CABLE, FUEL LID OPENER |
| 6 74440-S03-003 | WEATHERSTRIP, TAILGATE |
| 7 74801-S03-003 | LOCK, TAILGATE |
| 8 74811-S03-003 | ROD, TAILGATE LOCK |
| 9 74813-S03-003 | STRIKER ASSY., TAILGATE |
| 10 74827-SK7-000 | STOPPER A, TAILGATE |
| 11 74829-SH2-000 | COVER, OPEN STAY END |
| 12 74830-S03-003 | CABLE, TAILGATE OPENER |
| 13 74861-S04-003 | CYLINDER, TRUNK |
| 14 74867-S04-003 | HOLDER, ROD |
| 15 74882-SK7-003ZA | OPENER ASSY., TAILGATE *NH167L * (NH167L GRAPHITE BLACK) |
| 16 74990-S03-Z00ZA | SPOILER ASSY., TAILGATE *NH0 * (NH0 CHAMPIONSHIP WHITE) |
| 17 74993-S03-Z00 | PACKING, R. SPONGE |
| 18 85268-SA5-003 | STOPPER, TAILGATE (BLACK) |
| 19 85511-SB2-003ZQ | KNOB ASSY., FUEL OPENER *NH167L * (NH167L GRAPHITE BLACK) |
| 20 85512-SB2-003ZN | KNOB ASSY., TAILGATE OPENER *NH167L * (NH167L GRAPHITE BLACK) |
| 21 90103-SH2-000 | BOLT, TAILGATE OPENER STAY, 10MM |
| 22 90105-634-000 | BOLT-WASHER, 8X20 |
| 23 90306-S04-003 | NUT, LICENSE PLATE (HEX.) (SATO RASHI) |
| 24 90307-S03-000 | NUT, SPOILER CAP, 6MM |
| 25 90684-SD4-003 | CLIP, FUEL LID OPENER |
| 26 90856-SA5-003 | PLUG, TAILGATE HOLE |
| 27 91505-SH3-000 | CLIP A, RR. SPOILER |
| 28 91615-SM4-000 | PLUG, BLIND, 20X30 |
| 29 91902-SB2-003 | CUSHION, WIRE HARNESS (50X100) |
| 30 93401-06012-08 | BOLT-WASHER, 6X12 |
| 31 93402-06012-08 | BOLT-WASHER, 6X12 |
| 32 93403-06016-08 | BOLT-WASHER, 6X16 |
| 33 93403-06020-08 | BOLT-WASHER, 6X20 |
| 34 93405-06016-07 | BOLT-WASHER, 6X16 |
| 35 94071-08080 | NUT-WASHER, 8MM |
| 36 95550-25000 | PLUG, BLIND, 25MM |
| 37 71712-S00-A00 | SEAL, PACKING |
| 38 04741-S03-000 | STAY SET, R. TAILGATE OPEN |
| 39 04746-S03-000 | STAY SET, L. TAILGATE OPEN |
| 41 74993-S03-Z00 | PACKING, R. SPONGE |